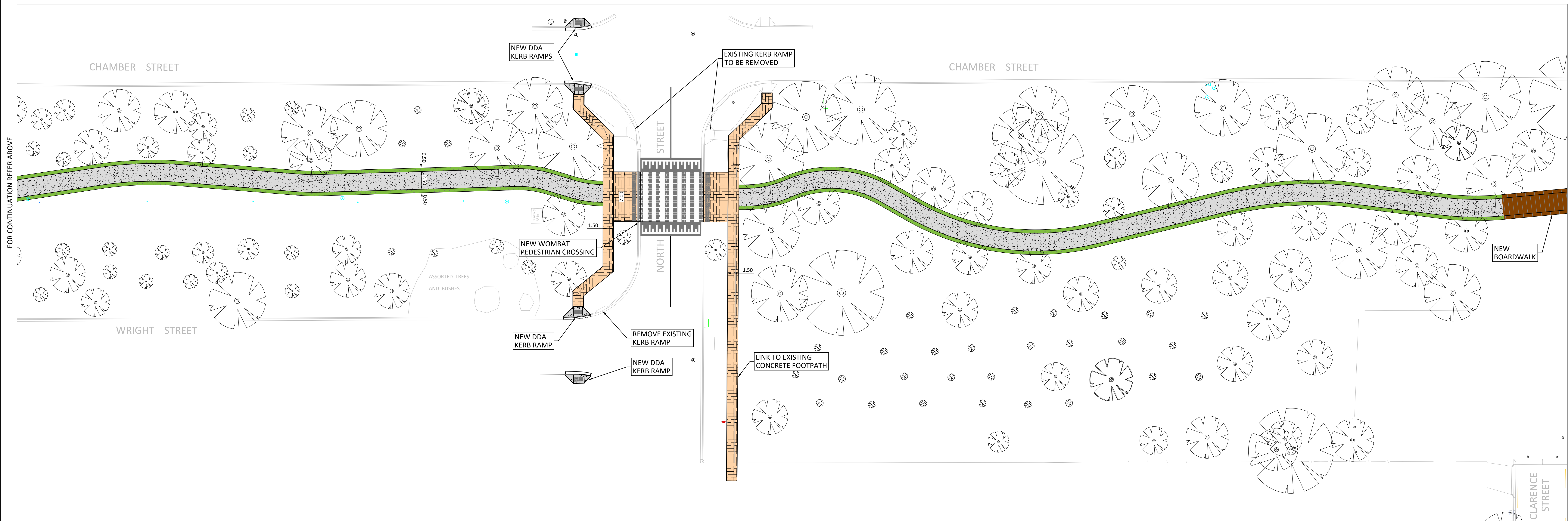
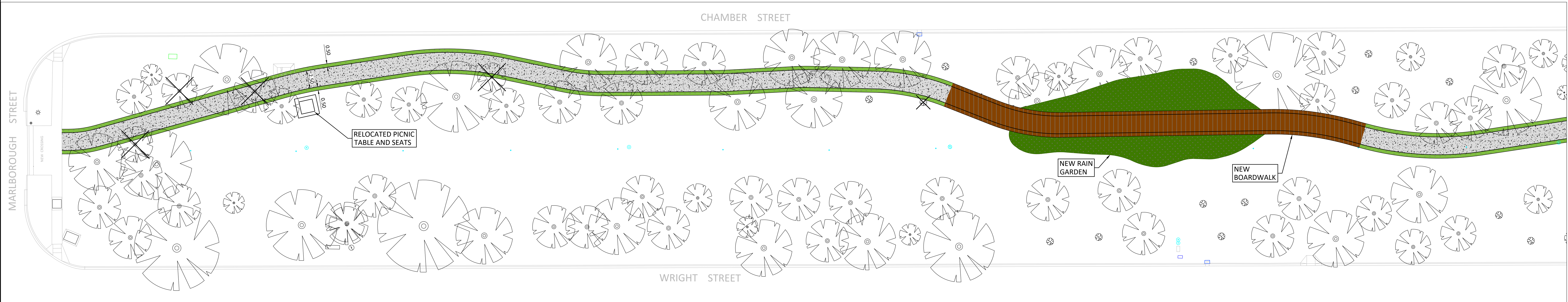
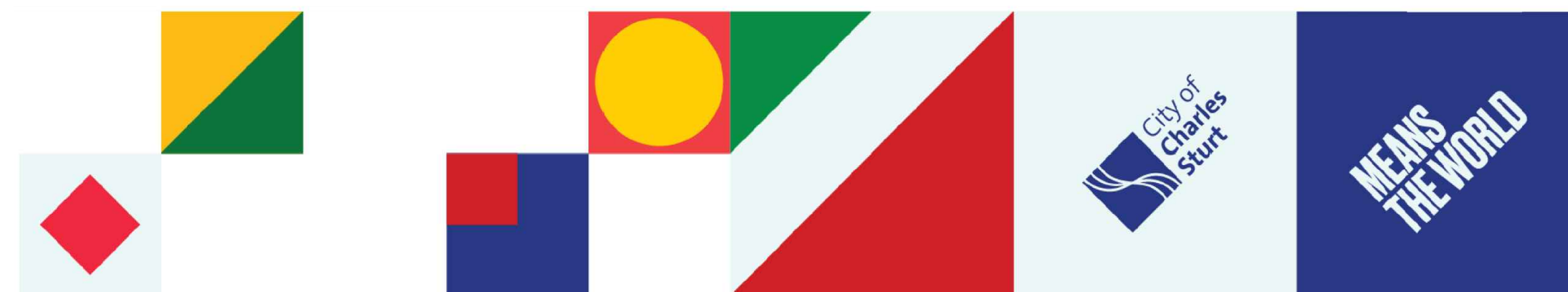
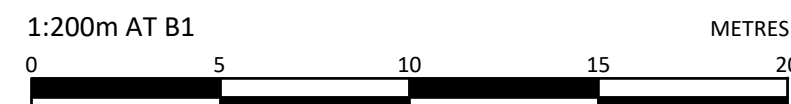
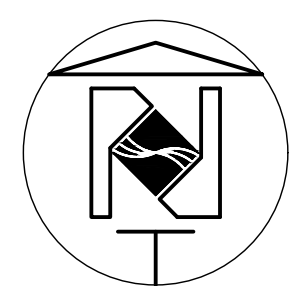
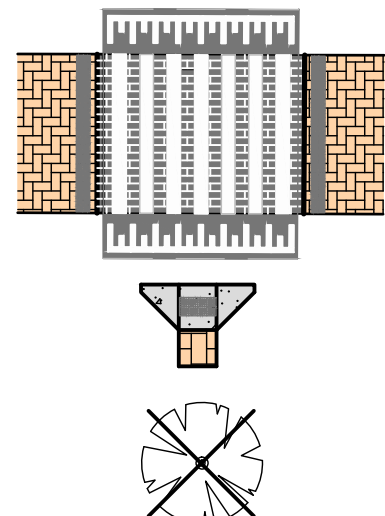
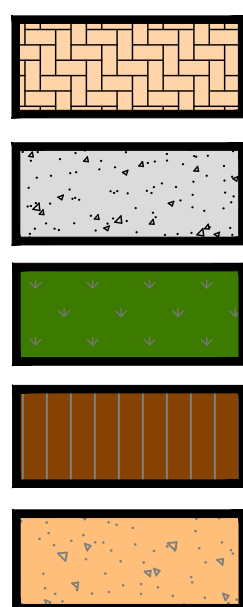


GRANGE LAKES  
SHARED USE PATH  
STAGE 7 AND 8  
SHEET 1



LEGEND



DRAWING FILE: T:\AUTOCAD DATA\PATHS\GRANGE LAKES - SHARED USE PATH\STAGE 7 AND 8\CONSULTATION\CONSULTATION\SHARED USE PATHS STAGE 7 & 8\CONSULTATION PLAN REV A.dwg 13/11/2023 3:02:29 PM



FOR CONTINUATION REFER SHEET 1



FOR CONTINUATION REFER BELOW

FOR CONTINUATION REFER ABOVE



## GRANGE LAKES SHARED USE PATH STAGE 7 AND 8 SHEET 2

### LEGEND

- NEW LUTUM INTERPAVE INTERLOCKING 60mm PAVERS IN CLINKER RED PAVED FOOTPATH
- CONCRETE SHARED USE PATH REFER TO DETAILS SHEET
- RAIN GARDEN
- PROPOSED 2.5m BOARDWALK
- PROPOSED NODE
- NEW WOMBAT PEDESTRIAN CROSSING
- NEW KERB RAMP AND LANDING - REFER DETAIL SHEET
- TREE TO BE REMOVED BY CCS PARKS & ARB. UNIT

1:200m AT B1  
0 5 10 15 20 METRES

