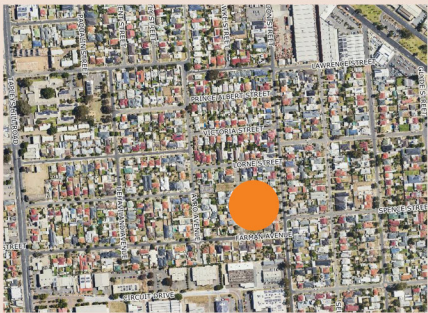


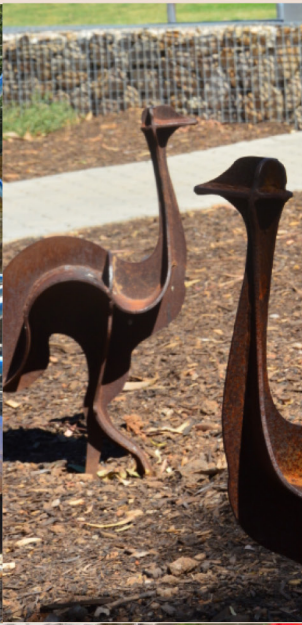
- 1 shelter, picnic table, seating & nearby drink fountain
- 2 playground
- 3 mound with climbing structure, slide, rocks, plants & small amphi-theatre steps
- 4 inclusive play
- 5 seat & rest area
- 6 'nature walk' & pollination plants
- 7 open lawn space
- 8 fencing entry gate
- 9 path lighting
- 10 River Red Gum sculpture
- 11 area for possible future community garden and little library
- 12 rest area, dog bowl & tap
- 13 bins



N
↑ site plan



SPAD STREET RESERVE ALBERT PARK NEW RESERVE - COUNCIL APPROVAL - CONCEPT PLAN



Images and plan are for illustrative purposes only. Final design may vary equipment or layout. All trees on the plan are shown at maturity.



SPAD STREET RESERVE ALBERT PARK NEW RESERVE - COUNCIL APPROVAL - CONCEPT PLAN