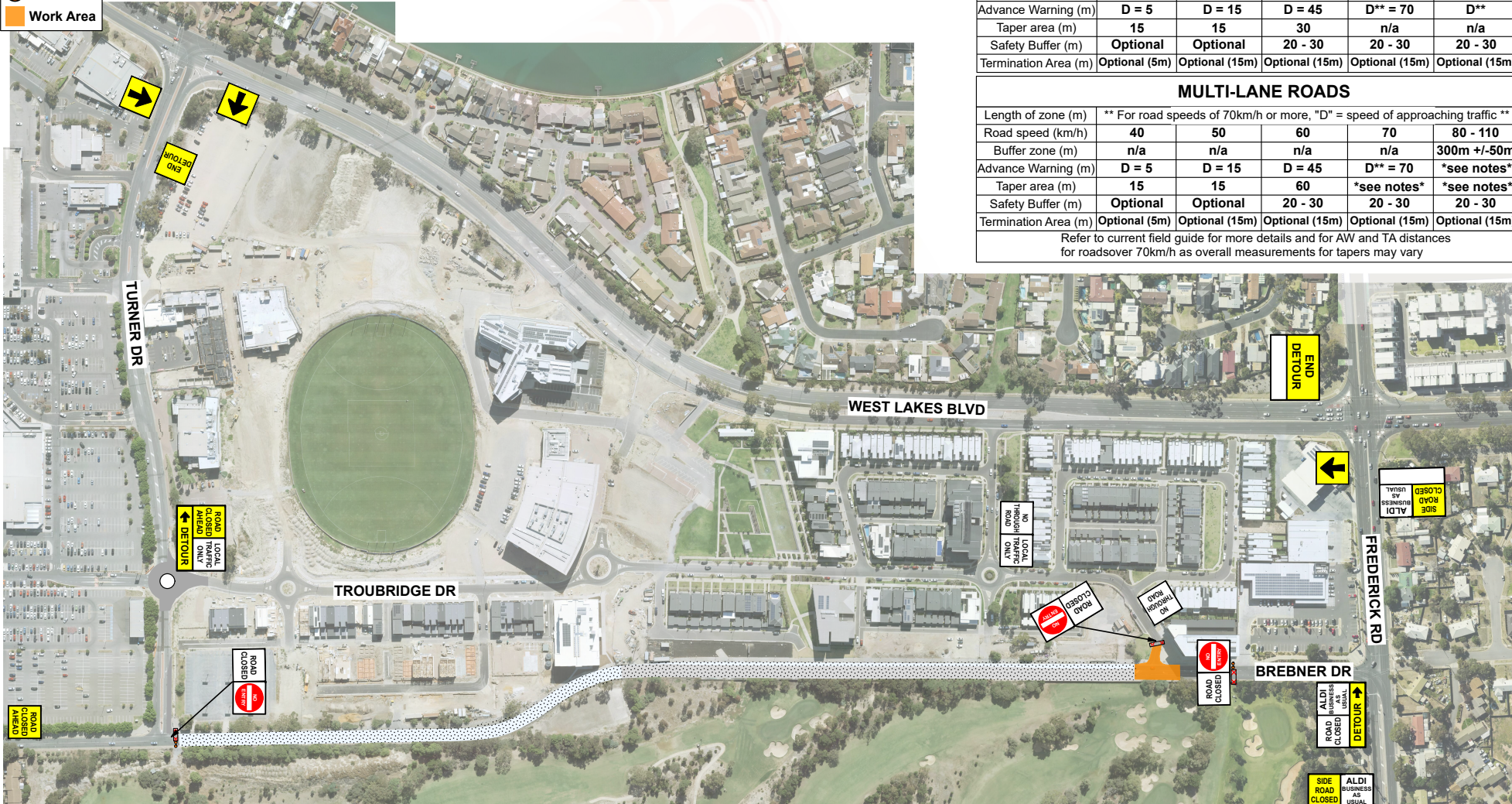


Legend

-  Barrier
-  Bollard
-  Work Area



TWO WAY - TWO LANE ROADS

Length of zone (m)	** For road speeds of 70km/h or more, "D" = speed of approaching traffic **				
Road speed (km/h)	40	50	60	70	80 - 110
Buffer zone (m)	n/a	n/a	n/a	n/a	300m +/-50m
Advance Warning (m)	D = 5	D = 15	D = 45	D** = 70	D**
Taper area (m)	15	15	30	n/a	n/a
Safety Buffer (m)	Optional	Optional	20 - 30	20 - 30	20 - 30
Termination Area (m)	Optional (5m)	Optional (15m)	Optional (15m)	Optional (15m)	Optional (15m)

MULTI-LANE ROADS

Length of zone (m)	** For road speeds of 70km/h or more, "D" = speed of approaching traffic **				
Road speed (km/h)	40	50	60	70	80 - 110
Buffer zone (m)	n/a	n/a	n/a	n/a	300m +/-50m
Advance Warning (m)	D = 5	D = 15	D = 45	D** = 70	*see notes*
Taper area (m)	15	15	60	*see notes*	*see notes*
Safety Buffer (m)	Optional	Optional	20 - 30	20 - 30	20 - 30
Termination Area (m)	Optional (5m)	Optional (15m)	Optional (15m)	Optional (15m)	Optional (15m)

Refer to current field guide for more details and for AW and TA distances for roadover 70km/h as overall measurements for tapers may vary

Prior to the commencement/cessation of any work on DPTI roads, notification by RAW traffic manager to the DPTI Traffic Management Centre is required (1800 018 313 or via the app). This traffic guidance scheme/traffic control plan was developed by competent and experienced person(s) in accordance with the Australian Standard - AS1742.3 and remains the property of RAW Recruitment & Services. Before the commencement of any works, RAW Recruitment & Services will carry out a risk assessment and develop controls, measures and plans to identify, eliminate or mitigate any hazards. This plan allows for the safe movement of vehicular and/or pedestrian traffic around the worksite, the protection of workers from passing traffic, for access to properties located within the limits of the worksite, for the implementation, maintenance and removal of any necessary temporary roadways and detours, the provision of traffic controllers, installation of temporary signs, temporary road delineation and any other safety measures or controls (ie; safety barriers) as required. RAW Recruitment & Services does not accept responsibility for compliance or any damages caused when this scheme is implemented or monitored by any third parties. On request RAW Recruitment & Services will provide accredited controllers, materials, resources and systems to properly perform the services related to the implementation of this traffic management plan. This plan is not to scale and is a representation only after a worksite traffic management checklist is completed. Minor on-site changes may be made by accredited persons and return speeds are to be adjusted to suit site conditions. All amendments will be outlined and recorded in a worksite diary or on the plan with times installed. Major changes must be reported to supervisory staff before being implemented.

Client: CATCON

Bus route: NO

TCP#
RAW-2021-0515B

Site contact: JULIE KUMAR

Phone: 0436 303 373

Location: BREBNER DR, WEST LAKES

Council Region
CHARLES STURT

Start Date: TBA

Finish Date: TBA

Start Time:

Finish Time:

Author: D.Caviedes

Date drawn: 9/8/21

Modified by:

Modified on: 15/9/21



NOT TO SCALE



RECRUITMENT & SERVICES

8312 5714

traffic@rawrecruitment.com.au