

# Fact Sheet

## New Path

### Why Are New Paths Installed?

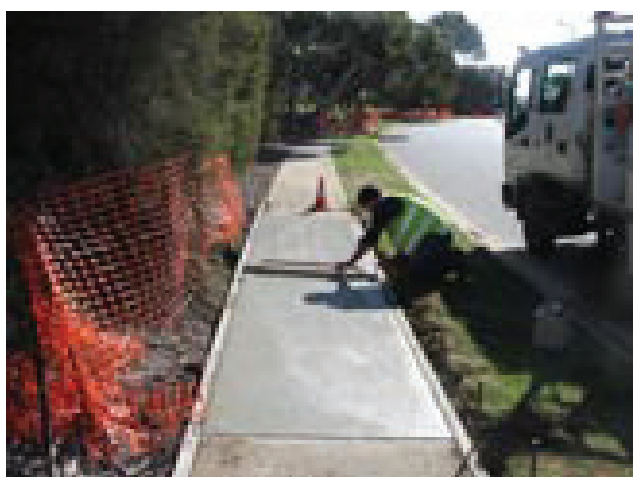
Council responds to resident requests for new paths, to provide an all-weather route, ensuring safety of all users and better connection to local services. As part of this process, Council Officers inspect the proposed locations and determined that a new path will meet the criteria set out in our path guidelines.

Paths are constructed with a minimum width of 1.5 metres; and up to 2.5 metres wide to meet demand and locational requirements. As a general rule, the material used will be fibre reinforced concrete which has proven to be an economical material being easy to install, having a long life with minimum maintenance and lowest overall cost over the whole life of the path.

Kerb ramps will be replaced where necessary to meet DDA compliant standards. This means they are not too steep so people with a mobility disability can safely travel over them.

Once these paths are replaced they will continue to provide safe pedestrian (and cycling) routes and more functional and attractive streets

Once a path is constructed, the condition of the asset is monitored through Council's Path Asset Management Plan which incorporates condition assessment and customer requests to develop a Path Renewal Program. The works priority is based on the condition assessment rating.



Path Renewal



Laying of New Path Surface

### Benefits of Installing New Paths:

- Improves safe pedestrian and cycling routes
- More functional and attractive streets
- Provides all weather access to local services
- Providing a defined level of service and monitoring performance

### How Long Will Construction Take?

There are a number of factors that may play a part in the length of time that path works take to complete. Generally new paths may take 1-2 weeks to complete, however this can depend on the weather, machinery, staffing and other jobs the contractors need to complete at the time.

Prior to path works commencing you may notice our staff/contractors walking along the street and marking up with spray paint areas along the kerb and gutter that need to be replaced.

Directly affected residents will receive further notification from our staff/appointed Contractor immediately prior to work commencing.



## Noise

Machinery used to complete road works can generate a lot of noise. Construction work is generally undertaken between 7am and 5pm Monday to Saturday.

## How do I access my property?

When works commence in your street contractors may advise you to relocate your vehicle if necessary, so you are able to have full use of your vehicle. We recognise that this is an inconvenience and do try to minimise disruptions to your access as much as possible.

## What Happens to Driveways?

Driveway crossovers are the responsibility of property owners and we intend to match the path into existing crossovers, however, when we replace paths we make an assessment of driveways and if they are a trip hazard to people walking along the path, we may replace that section of driveway. If this is the case, we will reconstruct the driveway crossover at no cost to you.

## When is a Crossover/Driveway Permit needed?

If your crossover/driveway is not marked for repairs and you would like it fixed you are responsible for the costs involved in getting the works done. A permit would need to be obtained from the council to meet specifications or you are more than welcome to arrange for the contractor undertaking the works to complete your crossover at the time of reconstruction. This work will be undertaken at the property owners cost.

More information regarding Engineering Permits can be found online – [www.charlessturt.sa.gov.au/WorksOnPublicRoad](http://www.charlessturt.sa.gov.au/WorksOnPublicRoad)

## What Happens to Lawns/Verge/Landscaping/Irrigation?

We recognise that some people install their own lawn on the council verge. During path works, we may store equipment on the verge which may cause the grass to die; the lawn will naturally grow back in time.

Council do not replace the lawn if this occurs. We recognise that some people landscape the Council verge. We often need to remove some of the landscaping on the Council verge to allow for the installation of a new path. If you do have any landscaping in the roadside verge that you would like to retain, you may remove it before our work commences. If you choose not to remove it, we will remove the landscaping.

If you have installed your own irrigation in the verge, please contact us to let us know so that we can minimise the chance of damaging it. Council uses all reasonable care to not damage irrigation installed in the verge.

If you wish to replant any landscaping, please ring 8408 1111 to obtain a permit once the path work is complete. Permits are required to ensure the planting is approved by us and does not obstruct pedestrian access.

If no landscaping is undertaken we will topsoil the area either side of the path. If you wish to be provided with lawn seed which will grow back over time, please ring 8408 1111 to arrange. Please note the property owner will be required to maintain and water the lawn seed until it is re-established.



DDA Compliant Pram Ramp