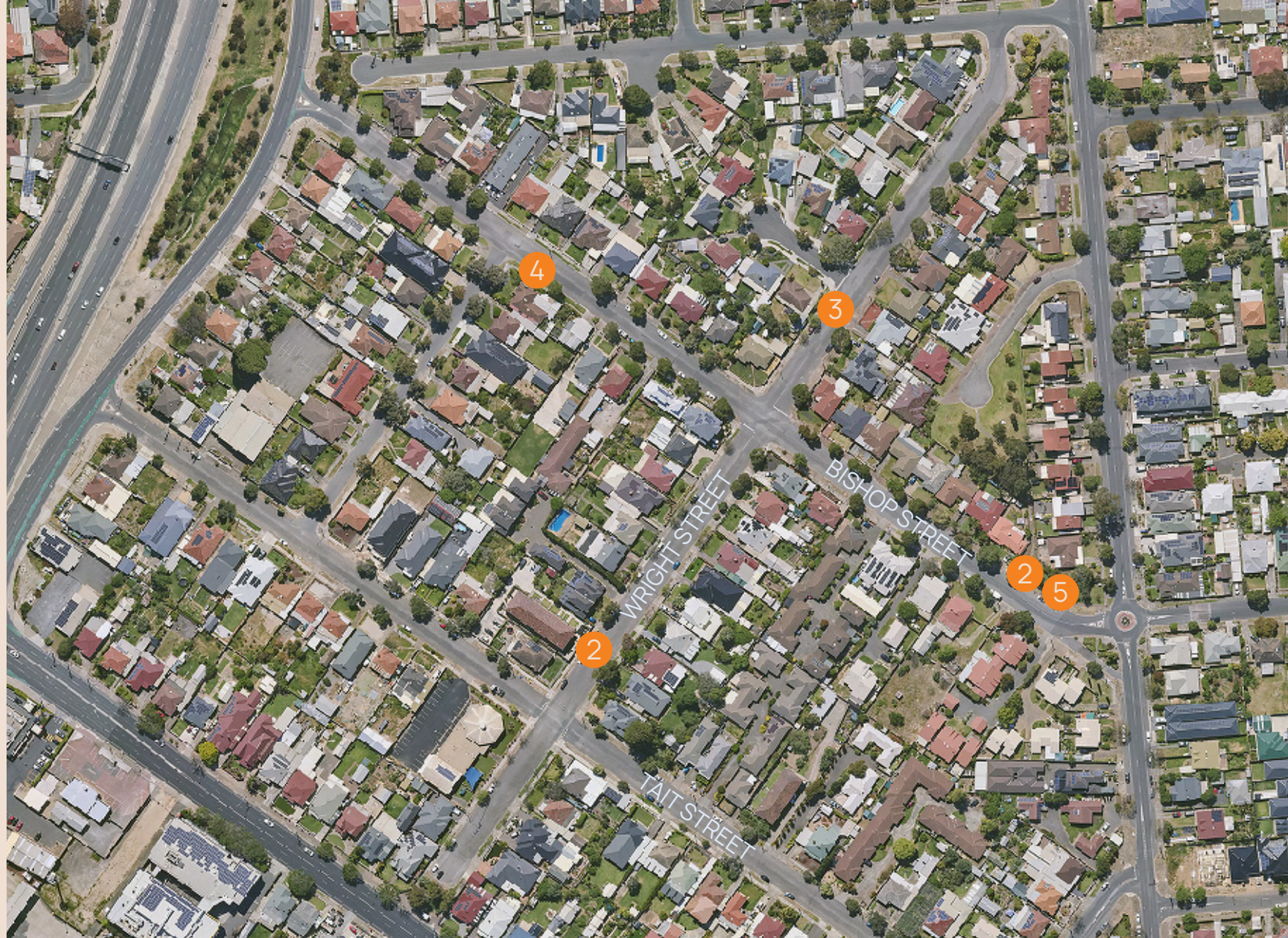


- 1 Adjacent 1 Bishop St
- 2 Adjacent 1 to 8/42 Wright St
- 3 Adjacent 1 Ann Place
- 4 Adjacent 13 Ferris St
- 5 Adjacent 16 Harrison Road

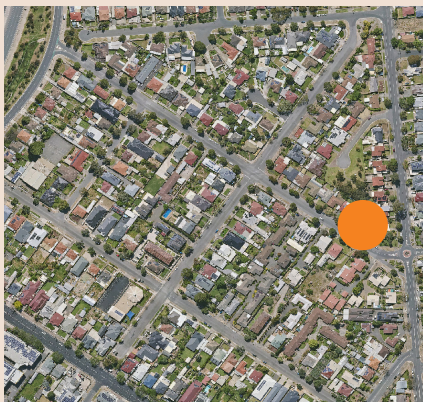
not to scale

03.2024



'LIVING STREETS' PROJECT - WRIGHT ST & BISHOP ST RENOWN PARK INTERPRETIVE SIGNAGE AND SMALL NATIVE BEE HOTELS

- 1 New Bee Hotel
- 2 Laneway through to Angus Reserve
- 3 Existing picnic setting
- Angus Reserve (budget bid, project area)



site plan

not to scale

02.2024

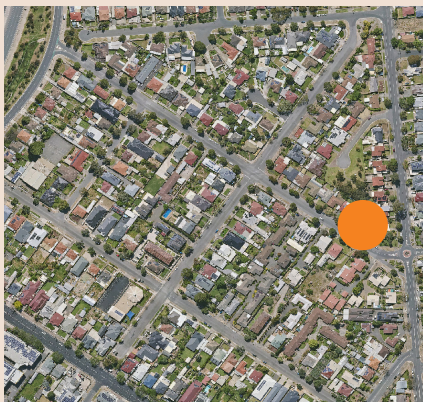


LANDSCAPING BUDGET BID 23/24

ANGUS RESERVE

RENOWN PARK

- 1 New Interpretive Sign & small Bee Hotel
- 2 Laneway through to Angus Reserve will include new pollination planting and irrigation.



site plan

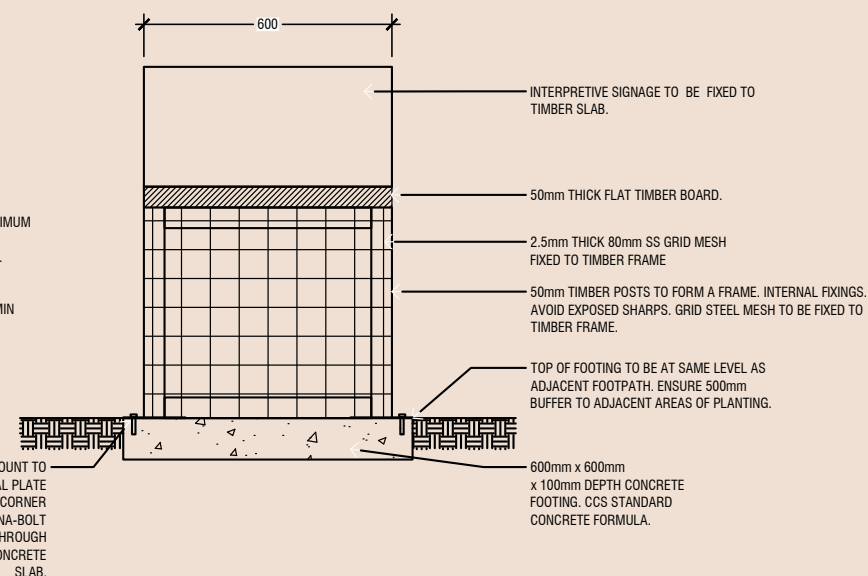
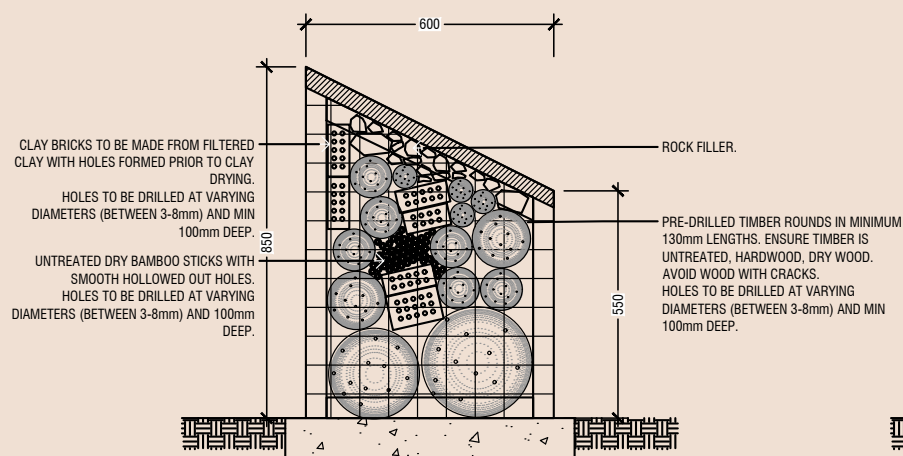
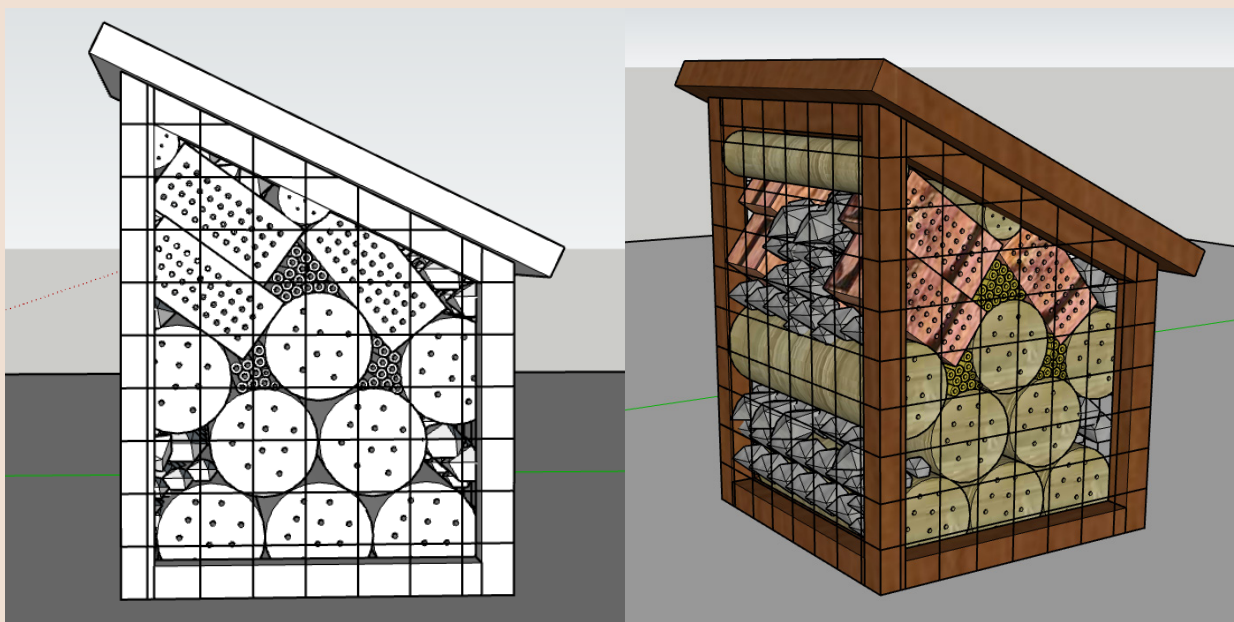
not to scale

02.2024



INTERPRETIVE SIGN & BEE HOTEL ANGUS RESERVE RENOWN PARK - LOCATION PLAN

Images and plan are for illustrative purposes only. Final design may vary equipment or layout.



INTERPRETIVE SIGN & BEE HOTEL ANGUS RESERVE RENOWN PARK CONCEPT DESIGN