



Renown Park Living Streets Project

Concept Design Report

Prepared for;



by JPE Design Studio

22157

July 2023
Rev E

Contents

Section	Page
Project Context	3
Vision & Objectives	7
Concept Development	10
Concept Plans	18
Key Plan	19
Wright Street	20
Bishop Street	24
Tait Street	28
Blight Street	33
Planting Palettes	36
Materials & Selections	39

JPE Design Studio Pty Ltd
Architecture
Interior Design
Landscape Architecture
Urban Design

Level 4, 19 Gilles Street
Adelaide SA 5000

Tel 08 8406 4000
Fax 08 8406 4007
design@jpe.com.au
www.jpe.com.au

ABN 97 007 776 249

Revision	Issue Date	Issued By
A	30.03.23	AL
B	03.05.23	AL
C	12.05.23	AL
D	06.07.23	AL
E	19.07.23	ME



JPE Design Studio & The City of Charles Sturt acknowledge the Kaurna people as the Traditional Custodians of the Adelaide region. We respect the spiritual relationship with Country that has developed over thousands of years, and the cultural heritage and beliefs that remain important to the Kaurna people today.

01

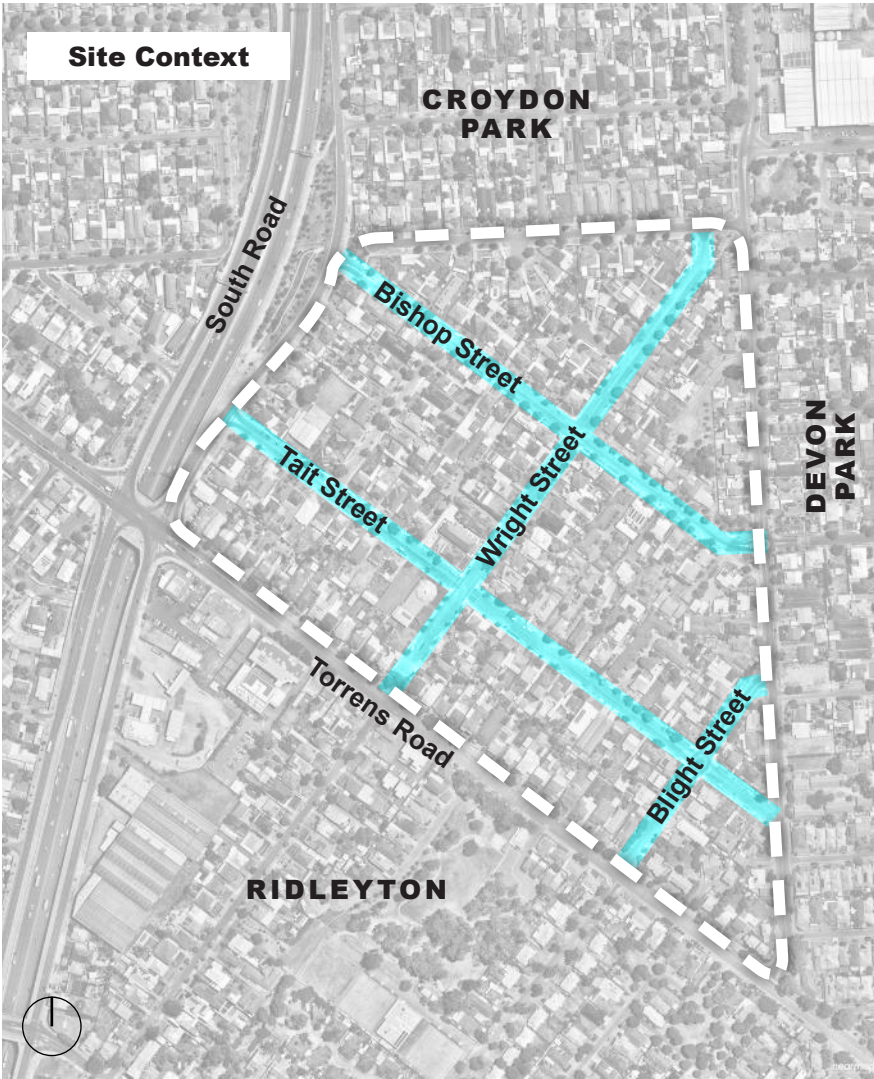
Project Context

Background

Four intersecting streets within Renown Park in Adelaide’s North West (Bishop Street, Blight Street, Tait Street and Wright Street) were identified in Council’s Transport Asset Management Plan for road reconstruction from the 2023/24 financial year onwards. These streets are bounded by South Road, Lamont Street, Harrison Road and Torrens Road (excluded from asset renewal), and house approximately 350 dwellings and a small number of other land uses.

During initial investigations for the works it was noted that all of these streets have very wide road pavements in the order of 12m wide. An opportunity was therefore identified to work with the local community to decide on the best use of this ‘surplus’ road space to meet the needs of the community now and into the future.

Council undertook an initial round of community engagement to understand the existing issues and opportunities they would like considered when developing the future designs. It was through this engagement process that the concept of ‘Living Streets’ was also established. The Living Streets concept is about re-imagining the design of our streets and neighbourhoods to prioritise people; whether it be as a walker, bike rider, driver or to socialise with family and neighbours.



Previous Consultation

Engaging with the community identified a desire to improve infrastructure (including stormwater drainage and road pavements), add new facilities, provide places to meet, improve road safety, improve walking and cycling connections and opportunities to increase the sense of ‘place’ within the neighbourhood. The community informed staff that they would like to see more greening within their neighbourhood through additional trees and Water Sensitive Urban Design (WSUD) style landscaping located within the verges and at intersections.

In October 2021 Council presented concept options for each street that reshape how local residents use their streets by making them greener, walkable and safer for all users. The concept options focused on the following initiatives;

- Reducing urban heat island effects
- Improving road user safety
- Increase amenity and biodiversity
- Encourage community use
- Incorporate place making opportunities
- Balance need for parking and access

The community favoured the option of a meandering roadway, seeing a narrowed 6m traversable area with a shifting centre line. This results in a large green verge on alternating sides of the road. Paved indented parking bays were shown within the concept design.

The narrowing of the roadway in the final concept presents an opportunity to provide approximately 6000m2 of landscaped surface back to the community (equivalent to a small sized reserve) in lieu of the surplus width of road asset. This provides ongoing benefit to heat island effects in the area and improved biodiversity.

Recommendations

- As a result of the feedback received during consultation on the original concepts, the following amendments were recommended for the preferred ‘Meandering Street’ concept:
- Include roundabouts at all 4-way intersections to further slow traffic
 - Incorporate WSUD elements into the verge areas
 - Further investigations to confirm understory and tree species selections
 - Work with Kaurna Yerta Aboriginal Corporation (KYAC) to identify any possible Cultural overlays or storytelling opportunities

Option 1: Wide Verge



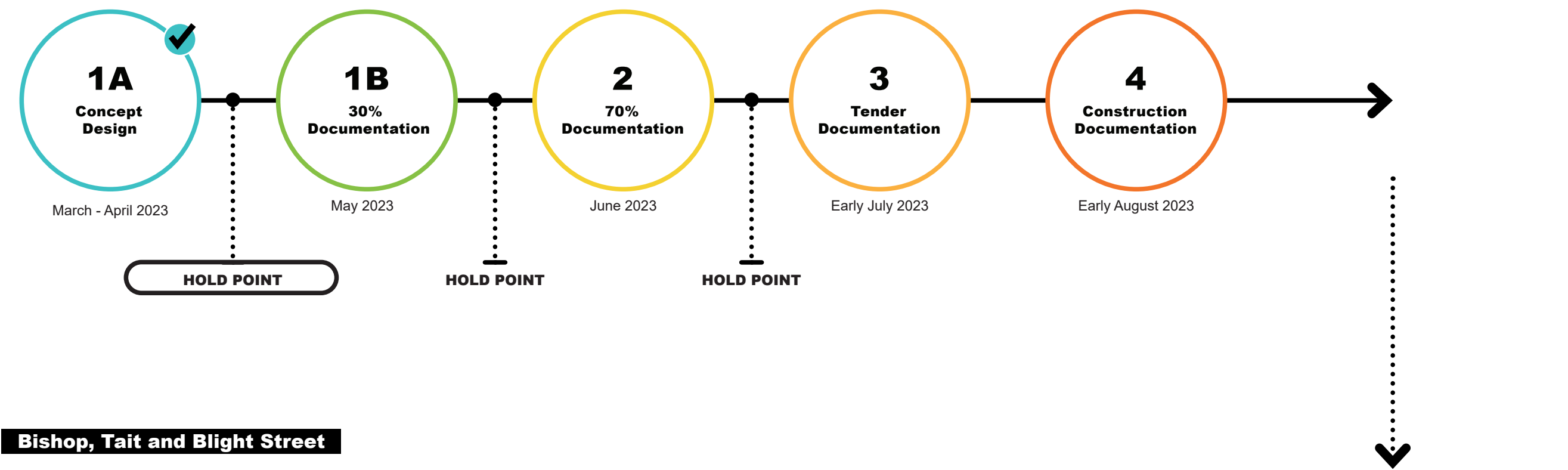
Option 2: Median Strip



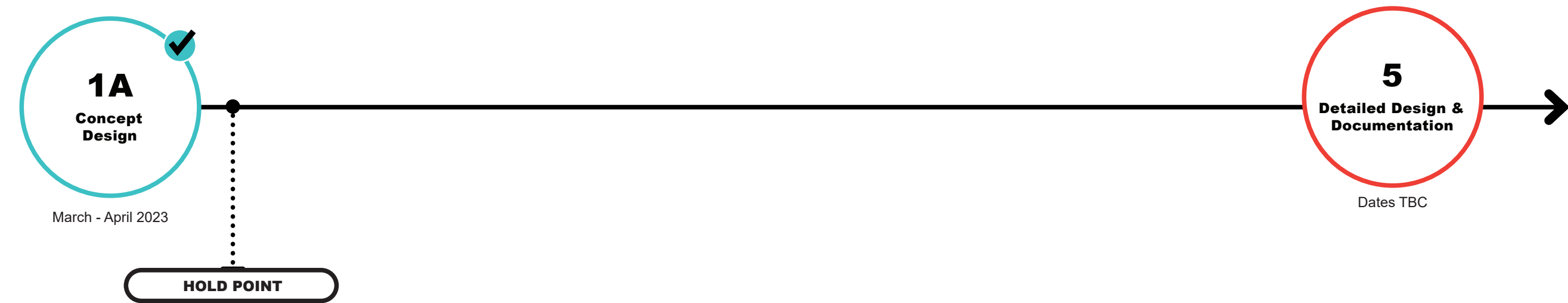
Option 3: Meandering Street



Project Process
Wright Street



Bishop, Tait and Blight Street



Existing Conditions

Presently the streets of Renown Park are typified by their long, straight roads with vast widths which facilitate high traffic speeds, limited pedestrian amenity and low environmental quality.

There are a number of existing street trees throughout the precinct, some of which are reaching the end of their life and due for replacement.

Most intersections are currently ‘give-way’ arrangements, with one roundabout at the Blight - Tait intersection.

- 1 Excessive 13m width (Wright St shown)
- 2 Existing street trees in decline on Tait Street
- 3 Variety of existing street tree species (Wright St shown)
- 4 Community preference for roundabouts (Blight-Tait intersection shown)
- 5 Broad intersections and hostile pedestrian environments (Wright-Tait intersection shown)



02

Vision & Objectives

Project Vision

The following Living Streets Vision was developed by the City of Charles Sturt and applies to a multitude of projects across the Council area, including the Renown Park streetscape upgrades. This vision has been used to guide the aspirations and intended outcomes of the project.

The Living Streets Program aims to re-imagine the design of our streets and neighbourhoods to prioritise people; whether it be as a walker, bike rider, driver or to socialise with family and neighbours.



Holland Street, Thebarton

Project Objectives

The Project Objectives and Design Outcomes identified below have been developed by JPE in response to the Project Vision. The Outcomes respond directly to each Project Objective and serve to provide a clear foundation and overarching direction that can be applied across the precinct and used to assist decision making.



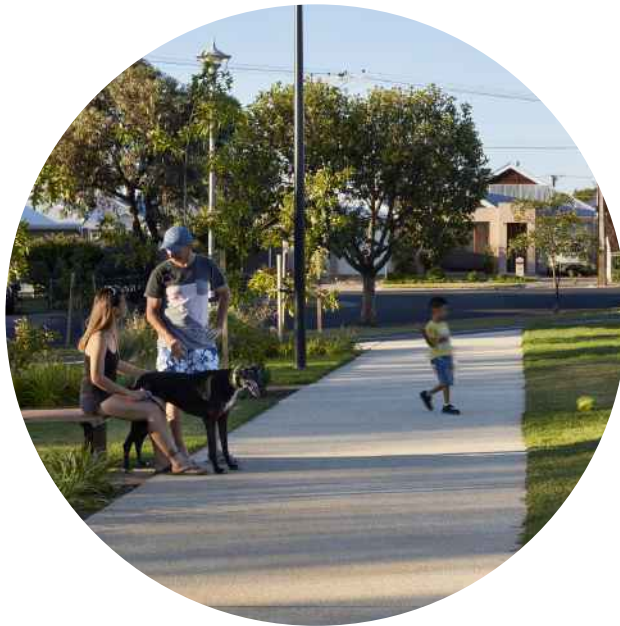
1 Improve stormwater management through Water Sensitive Urban Design (WSUD)



2 Contribute to improved urban biodiversity through 5 principles of Biodiversity Sensitive Urban Design (BSUD)



3 Recognition of Kaurna Country through cultural storytelling, education opportunities and culturally safe spaces and practices



4 Prioritise people and liveability, with slower traffic and high pedestrian amenity

Design Outcomes

- 1.1 | Introduce rain garden swales where possible within extended verge spaces
- 1.2 | Improve road crowns and crossfalls to facilitate better overland flow
- 1.3 | Incorporate permeable paving to parking spaces
- 1.4 | Include tree inlets on new kerbs

- 2.1 | Enhance habitat and resources
- 2.2 | Enable natural ecological processes
- 2.3 | Address threats and disturbances
- 2.4 | Facilitate positive human-nature interactions
- 2.5 | Improve connectivity to encourage dispersal

- 3.1 | Showcase native plants and their uses
- 3.2 | Tell a story across the site to improve community awareness and understanding of Country
- 3.3 | Incorporate public art, educational signage and Kaurna symbolism
- 3.4 | Create spaces to gather, reflect, learn and connect to Country

- 4.1 | Narrow the roadway with a meandering horizontal alignment
- 4.2 | Provide seating and gathering spaces within extended verge areas
- 4.3 | Create a connected street tree canopy
- 4.4 | Introduce incidental and informal play opportunities throughout larger reserve areas

03

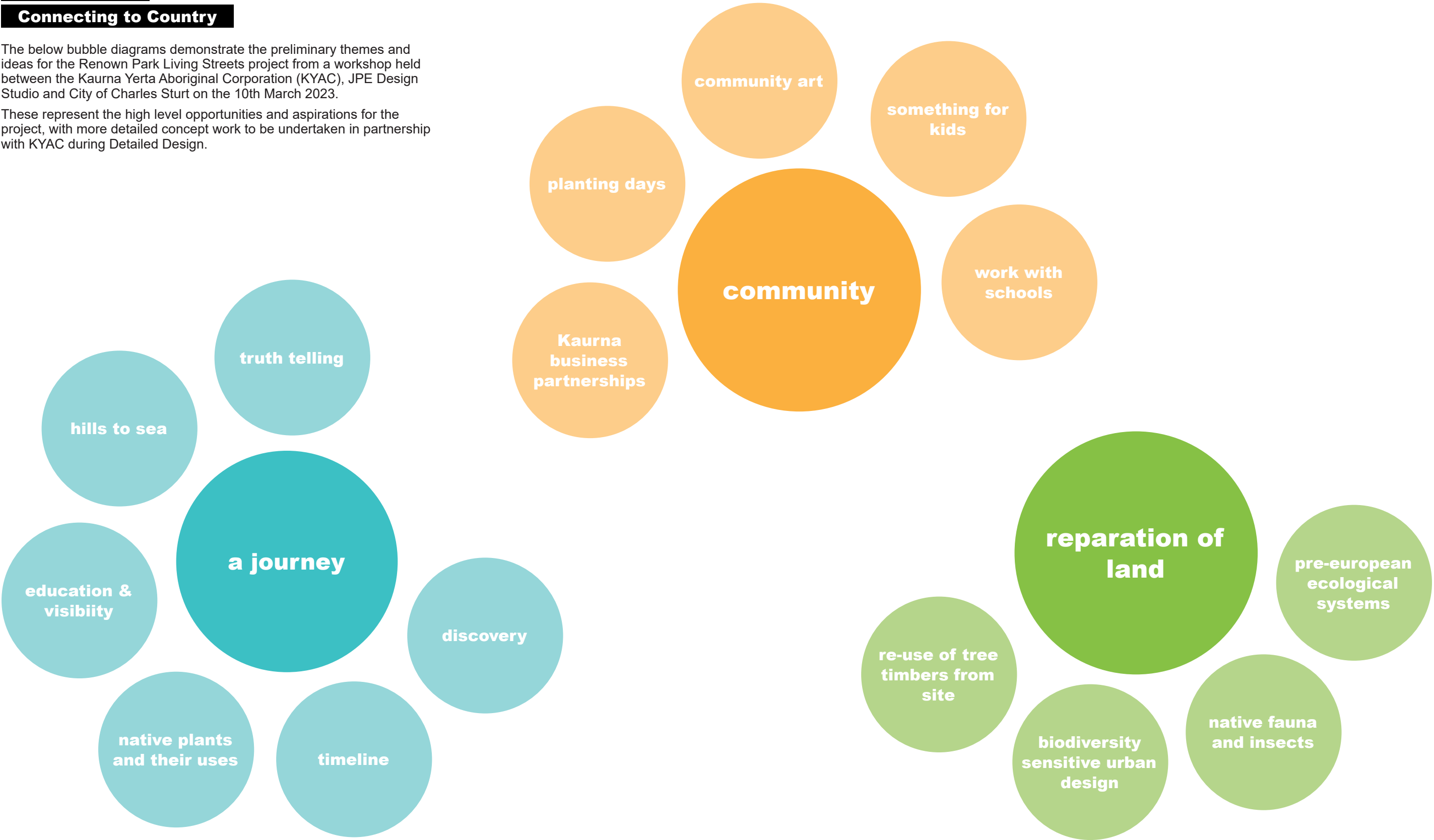
Concept Development

Concept

Connecting to Country

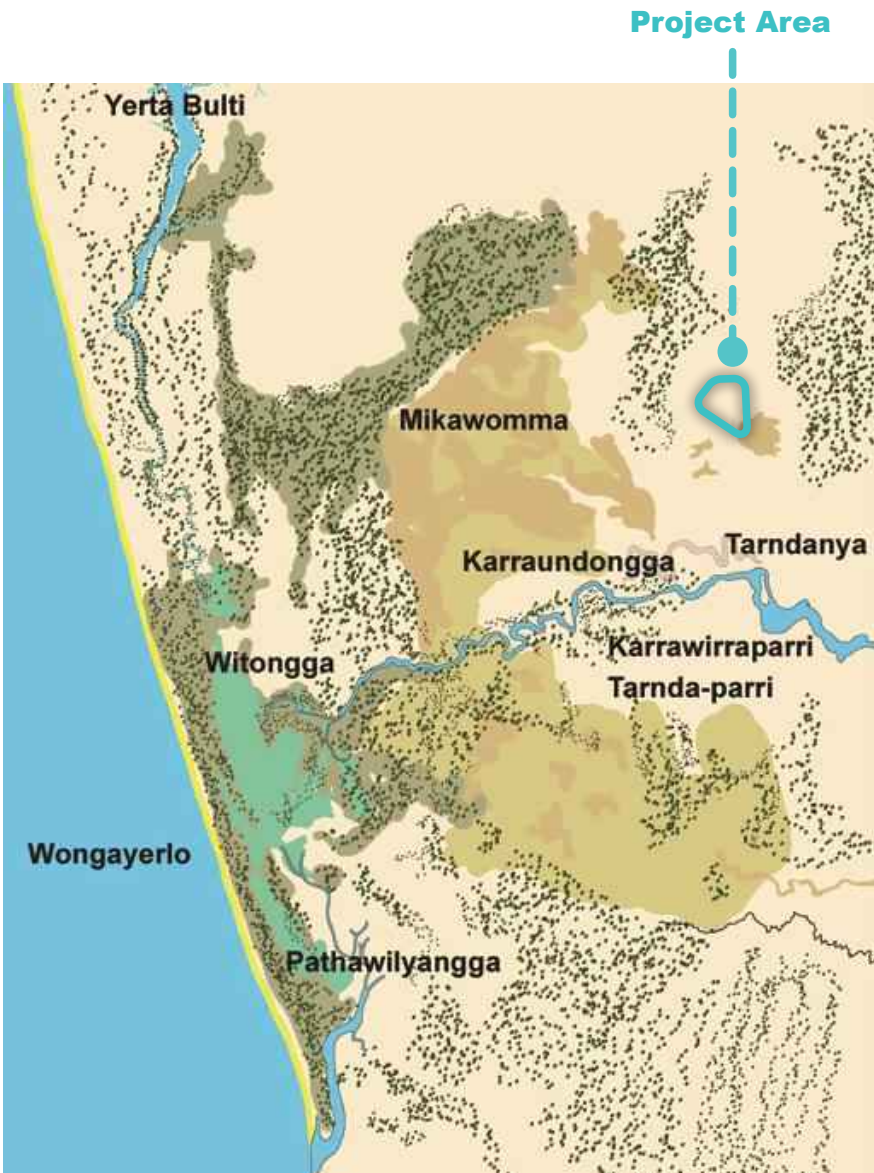
The below bubble diagrams demonstrate the preliminary themes and ideas for the Renown Park Living Streets project from a workshop held between the Kurna Yerta Aboriginal Corporation (KYAC), JPE Design Studio and City of Charles Sturt on the 10th March 2023.

These represent the high level opportunities and aspirations for the project, with more detailed concept work to be undertaken in partnership with KYAC during Detailed Design.



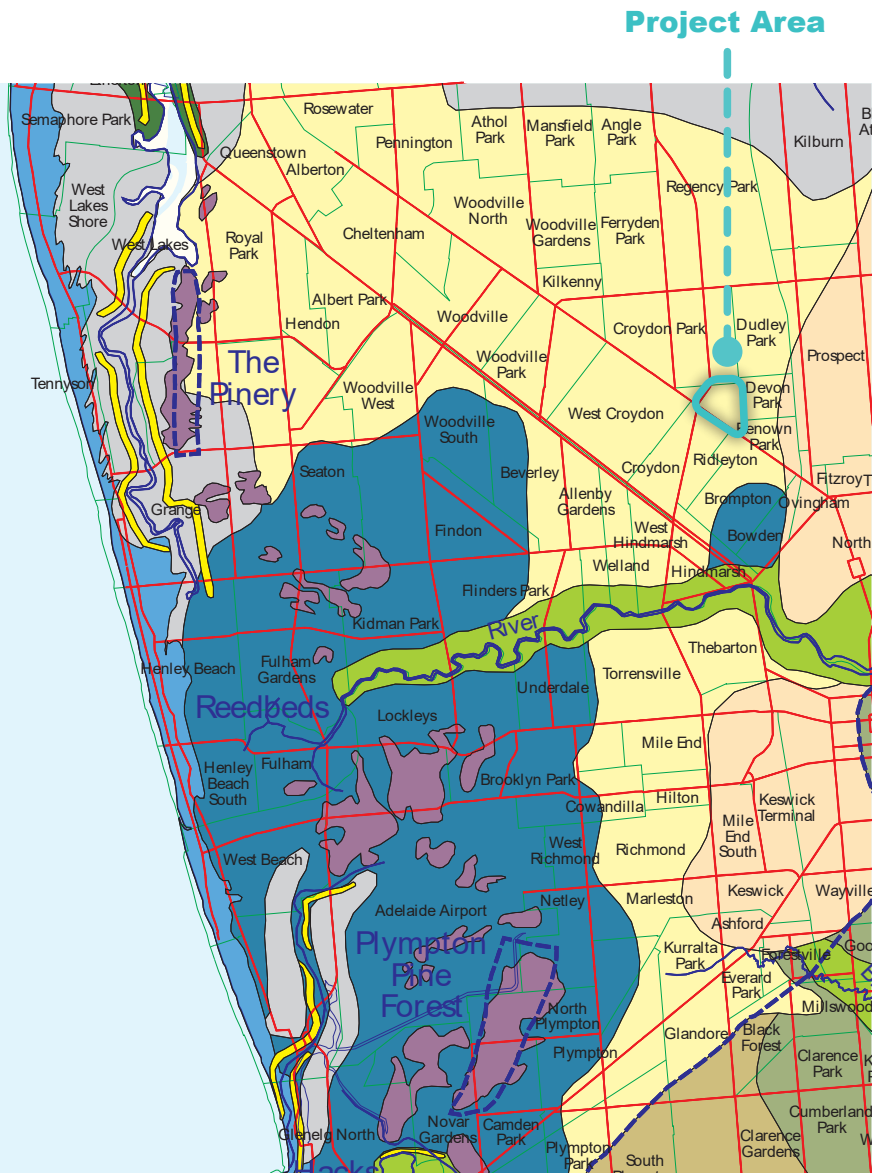
Concept

'A Journey Place'



Kurna places in Charles Sturt region

Project area lies within Mikawomma
Was once part of the alluvial flood plain of Karrawirraparri
Good area for hunting and harvesting fruit & vegetables



Pre-european Vegetation of the Adelaide Plains

Lies in an area where several ecologies met:

- Reedbeds / Sedgeland (Dark Blue)
- Grasslands (Light Yellow)
- Eucalyptus Porosa Woodland (Pink)

Very little remnant vegetation remains in the area
(none within the project site)



1838 Map drawn by Lieutenant Henry Nixon

Swathes of woodlands through grassy open plains
Described as "meadows with belts of scattered trees"

The above mappings and insights are extracted from 'The City of Charles Sturt, Kurna Meyunna Cultural Mapping: A People's Living Cultural Landscape' by Karl Winda Telfer and Gavin Malone

Concept
'A Journey Place'

- Navigation
- Places to Rest
- Learning from Country
- Food Collection
- Sense of Community

Different planting typologies for different areas of the site to highlight the changing landscape of Kaurna Country and recognise the experience of a journey across Mikawomma

Woodland



Coast



Grassland



A Journey Place
Examples of Node Spaces

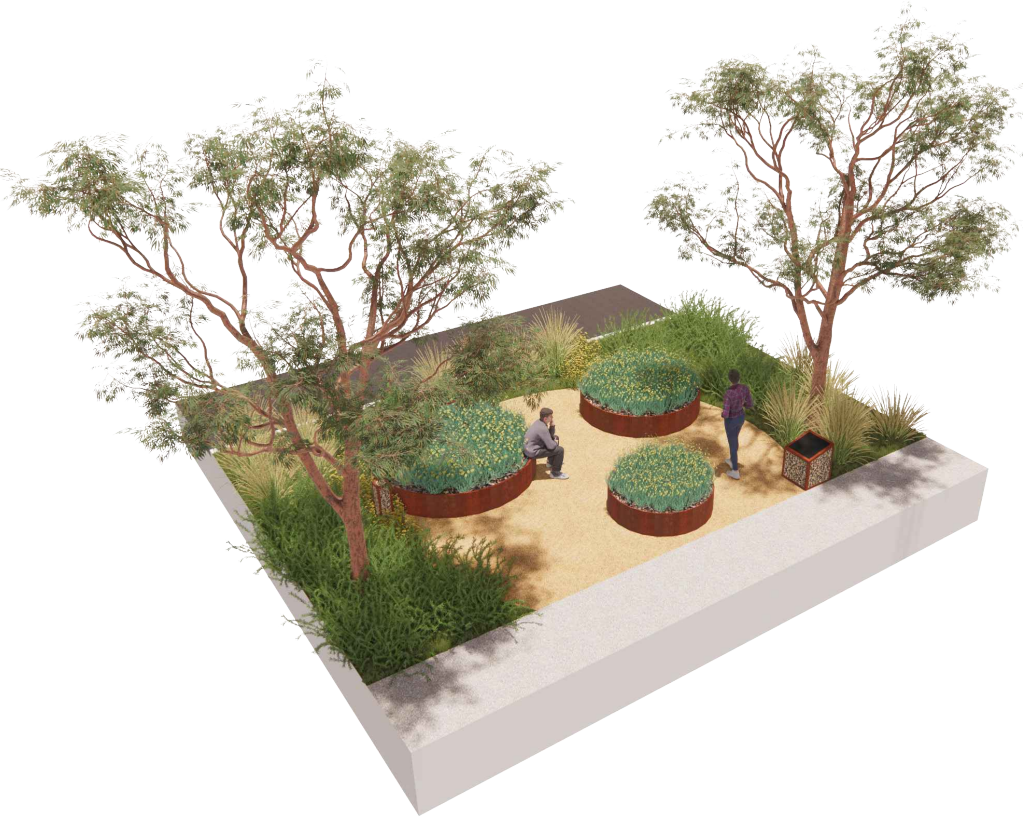
To recognise this area as a place that was once a place of journeying - three types of 'nodes' have been developed to showcase food gathering, rest points and navigation.

It is envisaged that these nodes would be scattered across the project area to create a network of discovery and learning, to recreate a sense of 'journey' in the region.

The below vignettes capture what could be a typical example of each of the node types. Two or more node types could also be combined at certain locations to create a resting and food gathering node (for example).

Zoomed in versions of the below diagrams with further information can be found on the following pages

Food Gathering



- Showcase Kurna foods and medicines
- Encourage a culture of harvesting, sharing and learning
 - Educational signage
- Raised planters to mitigate soil contamination issues
- Artwork opportunity on signage and planter edges
- Act as a network to create a journey or 'food trail'
- Type of plants to change across the site to reflect getting closer to the coast, woodlands or grasslands respectively

Resting



- Rest point at rain garden locations
 - 'Resting at the billabong'
- Informal nature play items using recycled timber from any trees felled in the area
 - Comfortable bench seating
 - Artwork opportunity on concrete pad (e.g. embedded pebbles painted by students or sandblasted artwork)

Navigation



- Wayfinding signage
 - For the suburb and to other culturally significant sites
 - Main sculptural art locations
- Tell stories of sky / seasons / animals and other themes of Kurna navigation
 - Act as gateways

Food Gathering Node
With Example Images



Rest Point Node
With Example Images



Navigation Node
With Example Images

New street tree planting
KYAC to review species
(Section 05)

Existing trees retained and
integrated into design

Biodiverse planting
KYAC to review species
(Section 05)

Current Kerbline

Wayfinding signage at a variety
of scales that speaks to local
businesses and streets as well as
Kaurua places, how long it would
take to walk there & educational
information about Kaurua Country
KYAC advice on Cultural places to
reference

Key sculptural art pieces.
Inspired by Kaurua plants,
navigation, sky, animals etc
KYAC advice on possible narratives
or stories for artwork
Tell the story of a journey place

Existing concrete footpath



04

Concept Plans

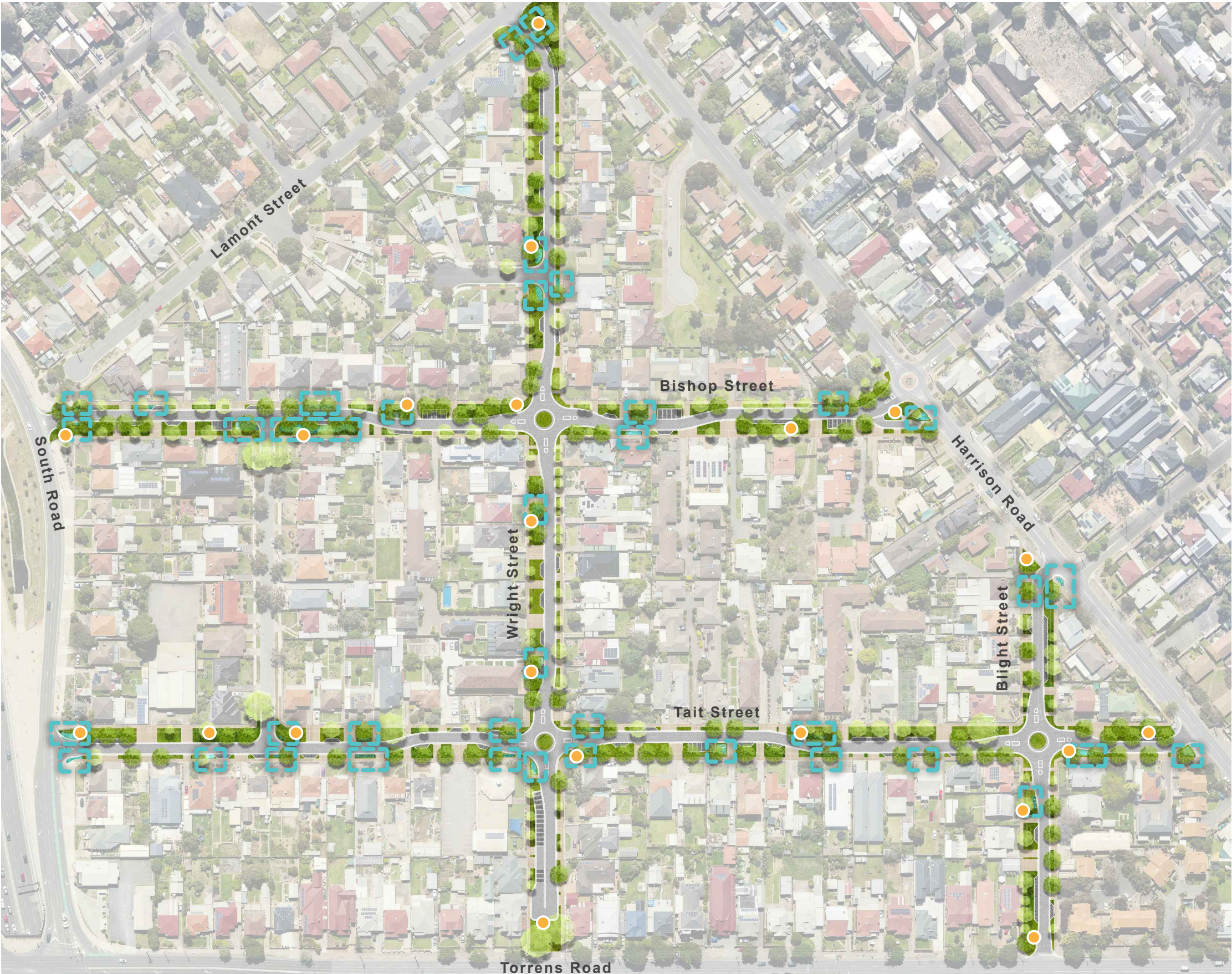
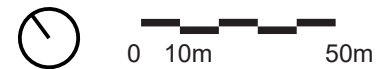
Precinct Plan

- Street Greening
- Swale Opportunity
- Concrete Footpath / Driveway
- Asphalt Road
- Paved Parking Indent
- New Tree
- Existing Tree
- Cultural 'Node' Location
(type of node to be confirmed and developed with further input from KYAC)

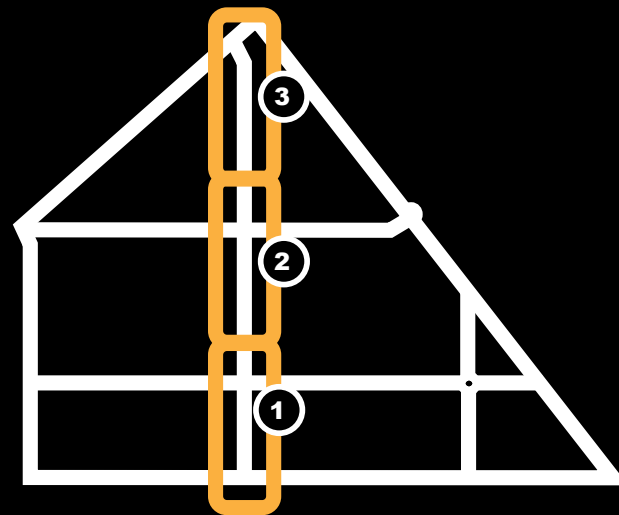
Quick Summary:

- 125 new trees
- 700m2 of rain gardens
- 11,000m2 of planting

NOTE:
Approximate areas based on concept design; final areas and tree totals subject to detailed design. New trees shown at mature size (10m canopy).



Wright Street

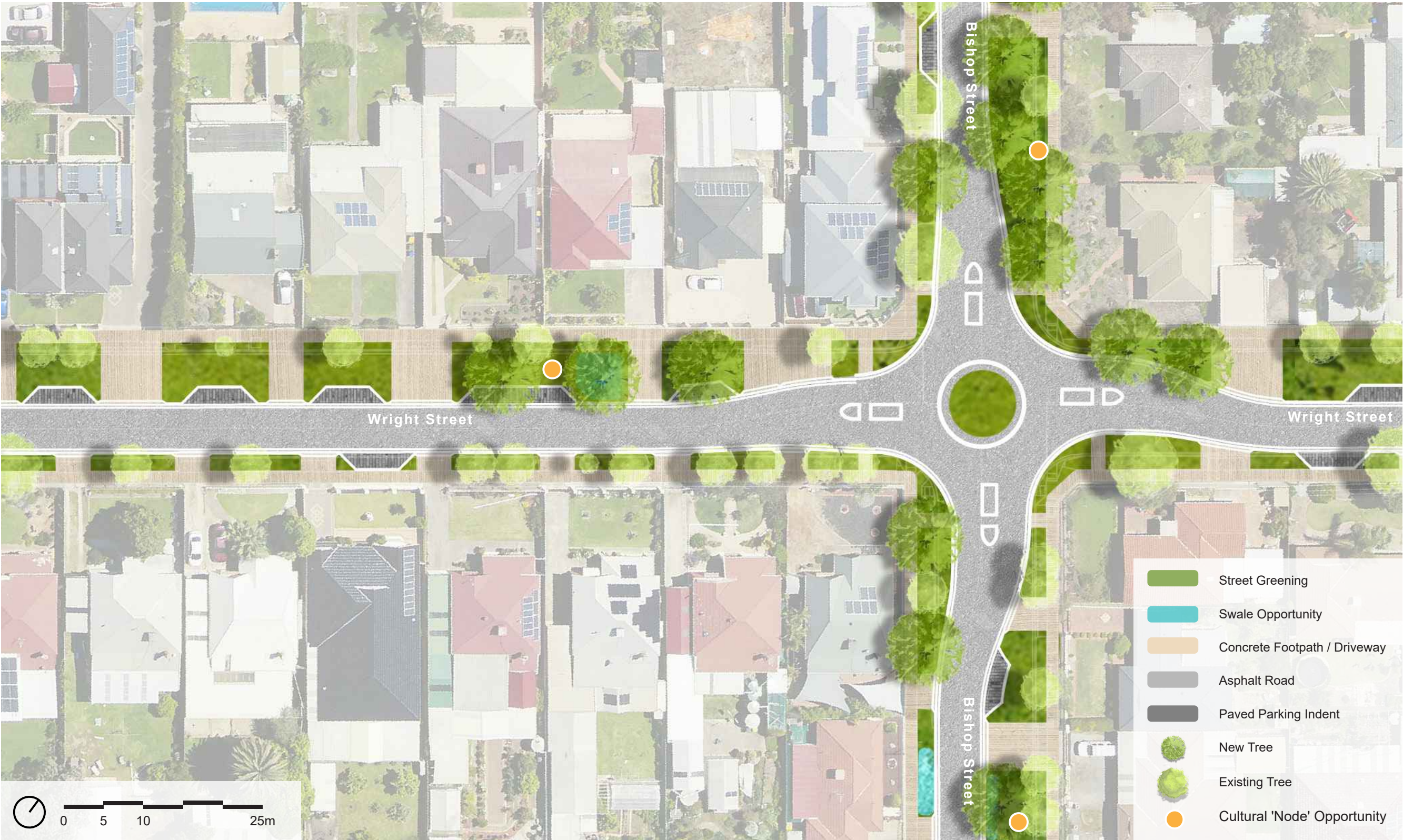


Wright Street
Concept Plan 1



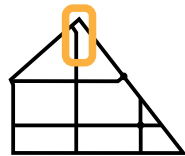
NOTE: new trees shown at mature size (10m canopy)

Wright Street
Concept Plan 2



NOTE: new trees shown at mature size (10m canopy)

Wright Street
Concept Plan 3

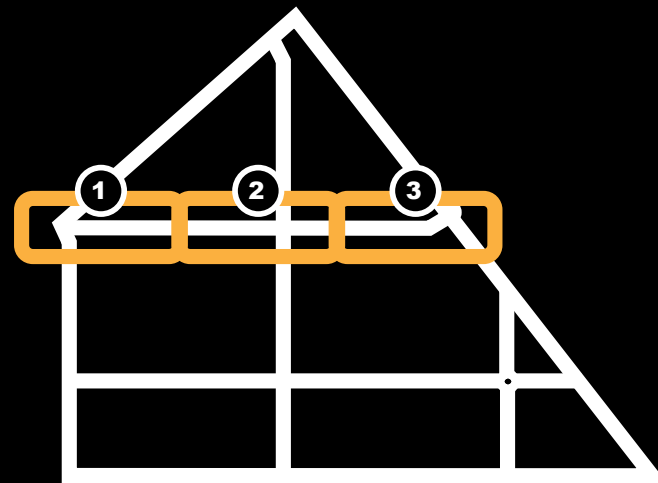


Key Plan

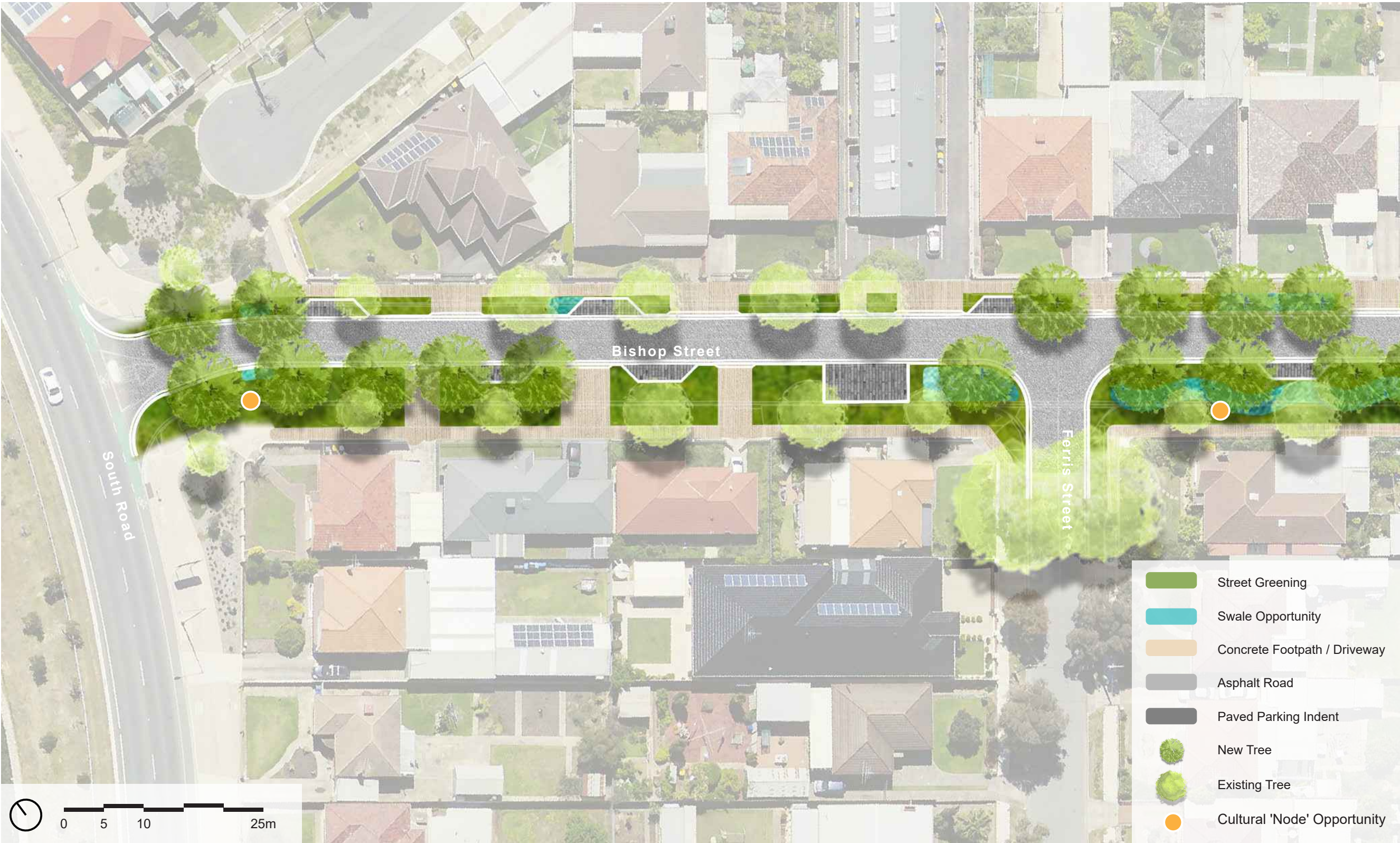
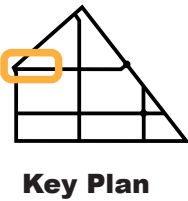


NOTE: new trees shown at mature size (10m canopy)

Bishop Street

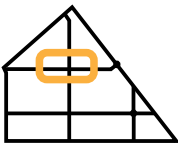


Bishop Street
Concept Plan 1

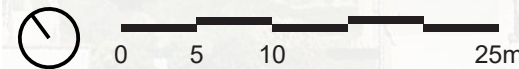


NOTE: new trees shown at mature size (10m canopy)

Bishop Street
Concept Plan 2



Key Plan



NOTE: new trees shown at mature size (10m canopy)

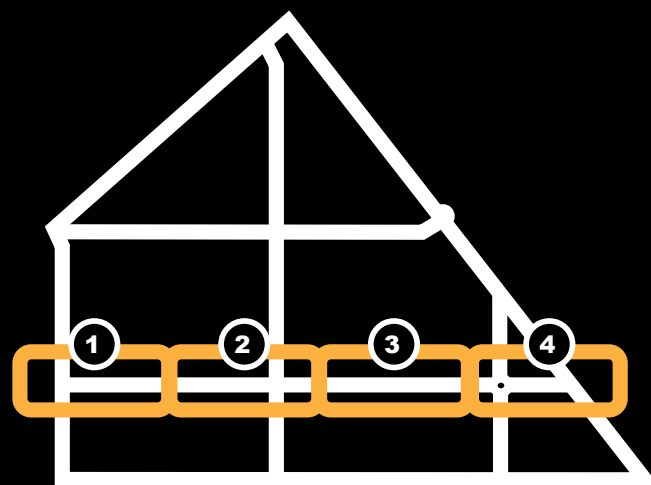
Bishop Street

Concept Plan 3



NOTE: new trees shown at mature size (10m canopy)

Tait Street



Tait Street
Concept Plan 1



NOTE: new trees shown at mature size (10m canopy)

Tait Street
Concept Plan 2



NOTE: new trees shown at mature size (10m canopy)

Tait Street
Concept Plan 3



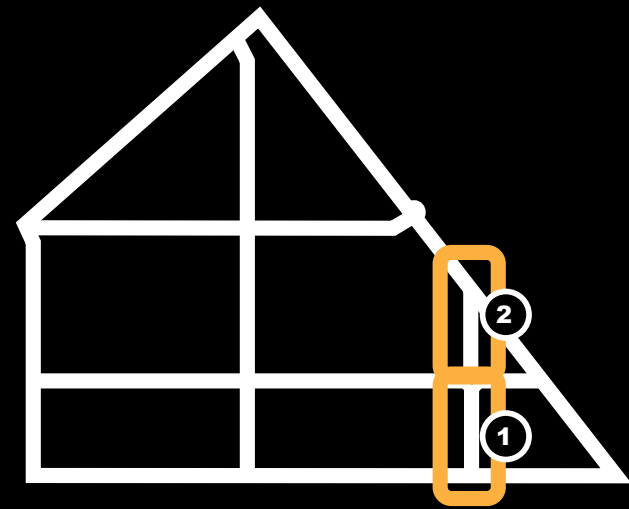
NOTE: new trees shown at mature size (10m canopy)

Tait Street
Concept Plan 4



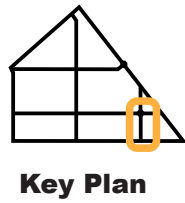
NOTE: new trees shown at mature size (10m canopy)

Blight Street



Blight Street

Concept Plan 1



- Street Greening
- Swale Opportunity
- Concrete Footpath / Driveway
- Asphalt Road
- Paved Parking Indent
- New Tree
- Existing Tree
- Cultural 'Node' Opportunity

NOTE: new trees shown at mature size (10m canopy)

Blight Street

Concept Plan 2



NOTE: new trees shown at mature size (10m canopy)

05

Planting Palettes

Street Tree Options

The below tree selections have been extracted from the City of Charles Sturt 'Street Tree Planting' species list.

Selections have been made based on maximising mature canopy size, ornamental qualities, habitat creation and significance to pre-european ecologies.

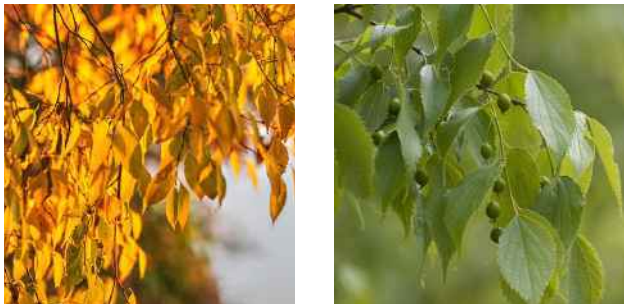
The below options are a suggestion only, with further collaboration and refinement with Kurna representatives and Council staff to occur as the project advances.

Eucalyptus torquata
Coral Gum



Height: 6-12m
Width: 5-10m
Seasonality: Evergreen
Origin: Western Australia

Celtis australis
Nettle Tree



Height: 10-15m
Width: 6-12m
Seasonality: Deciduous
Origin: Europe

Eucalyptus leucoxylon 'Rosea'
South Australian Blue Gum



Height: 10-30m
Width: 6-20m
Seasonality: Evergreen
Origin: South Australia

Geijera parviflora
Wilga



Height: 8-9m
Width: 6-9m
Seasonality: Evergreen
Origin: South Australia

Understorey Planting

The below species selection has been inspired by the pre-european ecology of the Renown Park area, with native grasslands and Eucalyptus woodlands coming together in this area. Species have been selected for their hardiness and suitability in a streetscape environment, their cultural significance to Kaurua Miyurna, ornamental qualities, and capacity for habitat creation and pollinator attraction

*Indicative list - subject to further cultural consultation. Suggested 'feature plants' for node points are marked with an orange spot (KYAC to advise on others).

Verge Planting

- Austrostipa nodosa
- Brachyscome multifida
- Brunonia australis
- Carpobrotus rossii
- Correa glabra
- Chryscephalum apiculatum
- Craspedia glauca



- Cymbopogon ambiguus
- Dianella revoluta
- Enchylaena tomentosa
- Gahnia filum
- Hardenbergia violacea
- Kennedia prostrata
- Kunzea pomifera



- Leucophyta brownii
- Linum marginale
- Microseris lanceolata
- Myoporum insulare prostrate
- Myoporum viscosum
- Olearia ramulosa
- Patersonia occidentalis



- Rhagodia parabolica
- Santalum acuminatum
- Scaevola albida
- Themeda triandra
- Teucrium Marum
- Wahlenbergia stricta
- Westringia 'Grey Box'



Swale Planting

- Carex apressa
- Cyperus gymnocaulos
- Dianella longifolia
- Ficinia nodosa
- Isolepis cernua
- Juncus pallidus
- Schoenoplectus validus



06

Materials & Selections

Materials

Surfaces

The proposed surface finishes of Renown Park are intended to be robust, low maintenance and mindful of the existing character and recent upgrades completed by Council.

Permeability has been prioritised wherever possible to achieve positive WSUD outcomes, with sand and permeable pavers the primary new path materials.

Materials should be locally sourced to reduce environmental footprint and showcase the colours and characteristics of the Adelaide Plains



Brushed Concrete

All existing footpaths have recently been upgraded with a brushed concrete finish and will be retained and remediated where possible.



Compacted Fines

Node points and clear areas for bin collection will primarily use compacted fines for a natural and permeable finish. Fines should be sourced from local Adelaide Hills quarries.



Permeable Pavers

Indented car parking zones will have permeable pavers in a two-toned mottled effect.



Stone Screenings

WSUD swales to be lined with local sandstone and bluestone screenings sourced from Adelaide Hills quarries.



Feature Concrete

Node points with furniture to use a feature concrete paving with sandblasted artwork that mimics the colour tones of local stone



Biodiverse Planting

Extended verge spaces to be planted out with biodiverse planting for habitat creation and significance to cultural concept

Materials

Furniture

- Warmth and texture
- Pleasant tactile experience
- Durable, low maintenance
- Locally sourced, recyclable or natural materials
- Reflect Kaurna storytelling (feature colour could represent key plants or journey from hills to coast etc)



Corten Signage

Self healing and durable steel finish for signage



Corten Edging

Self healing and durable steel finish for garden edging



Felled Logs

Logs salvaged from any tree losses in the area as part of the project works to create informal seating and nature play opportunities



Stone Blocks

Locally sourced Adelaide Hills stone blocks to act as informal seating / nature play opportunities at key nodes. Opportunity to integrate stone carvings



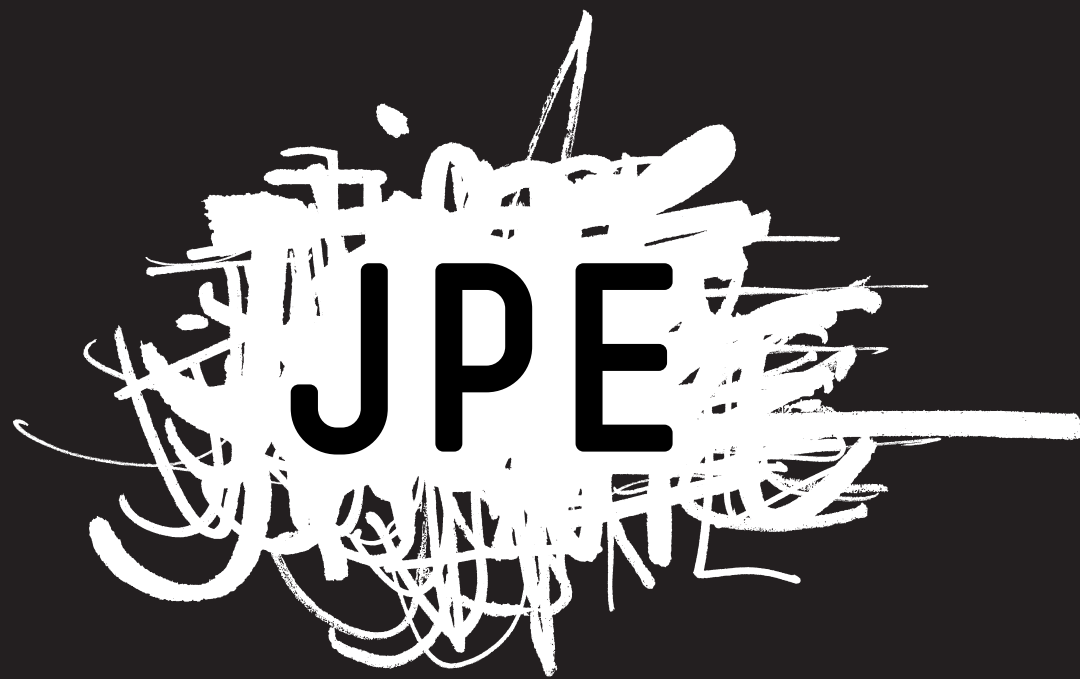
Aluminium Battens

Recycled aluminium wood-look battens to provide a natural look with unlimited recyclability and low maintenance



Furniture Artwork

Integrated commissioned artwork pieces from Kaurna artists throughout precinct



JPE Design Studio

Architecture | Interior Design | Landscape Architecture | Urban Design

www.jpe.com.au

(08) 8406 4000

Level 4/19 Gilles Street,
Adelaide SA 5000