

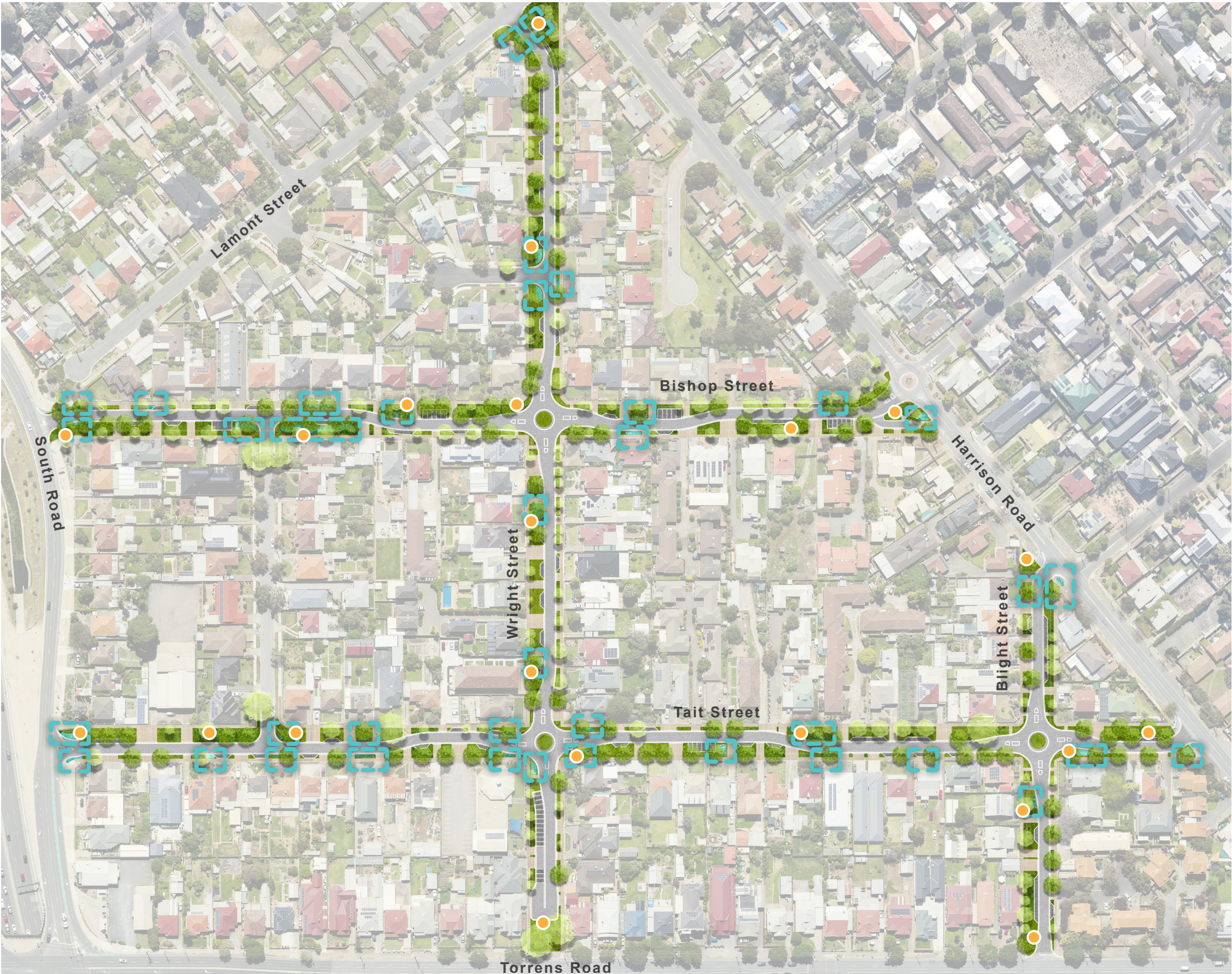
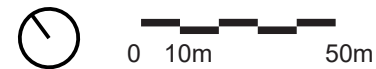
Precinct Plan

- Street Greening
- Swale Opportunity
- Concrete Footpath / Driveway
- Asphalt Road
- Paved Parking Indent
- New Tree
- Existing Tree
- Cultural 'Node' Location
(type of node to be confirmed and developed with further input from KYAC)

Quick Summary:

- 125 new trees
- 700m2 of rain gardens
- 11,000m2 of planting

NOTE:
Approximate areas based on concept design; final areas and tree totals subject to detailed design. New trees shown at mature size (10m canopy).



Street Tree Options

The below tree selections have been extracted from the City of Charles Sturt 'Street Tree Planting' species list.

Selections have been made based on maximising mature canopy size, ornamental qualities, habitat creation and significance to pre-european ecologies.

The below options are a suggestion only, with further collaboration and refinement with Kurna representatives and Council staff to occur as the project advances.

Eucalyptus torquata
Coral Gum



Height: 6-12m
Width: 5-10m
Seasonality: Evergreen
Origin: Western Australia

Celtis australis
Nettle Tree



Height: 10-15m
Width: 6-12m
Seasonality: Deciduous
Origin: Europe

Eucalyptus leucoxylon 'Rosea'
South Australian Blue Gum



Height: 10-30m
Width: 6-20m
Seasonality: Evergreen
Origin: South Australia

Geijera parviflora
Wilga



Height: 8-9m
Width: 6-9m
Seasonality: Evergreen
Origin: South Australia

Understorey Planting

The below species selection has been inspired by the pre-european ecology of the Renown Park area, with native grasslands and Eucalyptus woodlands coming together in this area. Species have been selected for their hardiness and suitability in a streetscape environment, their cultural significance to Kaurua Miyurna, ornamental qualities, and capacity for habitat creation and pollinator attraction

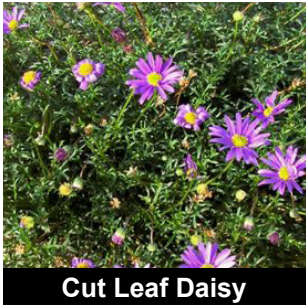
*Indicative list - subject to further cultural consultation. Suggested 'feature plants' for node points are marked with an orange spot (KYAC to advise on others).

Verge Planting

- Austrostipa nodosa
- Brachyscome multifida
- Brunonia australis
- Carpobrotus rossii
- Correa glabra
- Chryscephalum apiculatum
- Craspedia glauca



Tall Spear-Grass



Cut Leaf Daisy



Blue Pincushions



Karkalla / Pigface



Native Fuchsia



Common Everlasting



Billy Buttons

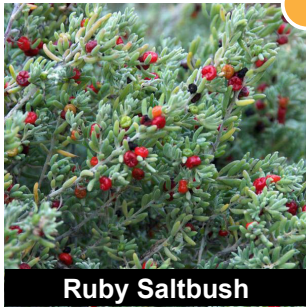
- Cymbopogon ambiguus
- Dianella revoluta
- Enchylaena tomentosa
- Gahnia filum
- Hardenbergia violacea
- Kennedia prostrata
- Kunzea pomifera



Native Lemongrass



Flax Lily



Ruby Saltbush



Thatching Grass



Native Lilac

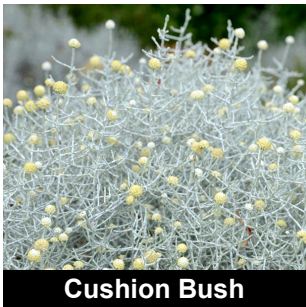


Running Postman



Muntries

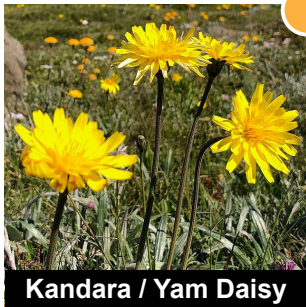
- Leucophyta brownii
- Linum marginale
- Microseris lanceolata
- Myoporum insulare prostrate
- Myoporum viscosum
- Olearia ramulosa
- Patersonia occidentalis



Cushion Bush



Native Flax



Kandara / Yam Daisy



Common Boobialla



Sticky Boobialla



Twiggy Daisy Bush



Long Purple-Flag

- Rhagodia parabolica
- Santalum acuminatum
- Scaevola albida
- Themeda triandra
- Teucrium Marum
- Wahlenbergia stricta
- Westringia 'Grey Box'



Fragrant Saltbush



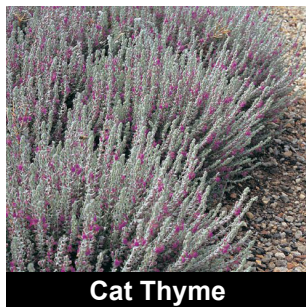
Quandong



Fan Flower



Kangaroo Grass



Cat Thyme



Tall Bluebell



Native Rosemary

Swale Planting

- Carex apressa
- Cyperus gymnocaulos
- Dianella longifolia
- Ficinia nodosa
- Isolepis cernua
- Juncus pallidus
- Schoenoplectus validus



Tall Sedge



Spiny Flat Sedge



Pale Flax Lily



Knobby Club Rush



Nodding Club Rush



Pale Rush



River Club Rush

Materials

Surfaces

The proposed surface finishes of Renown Park are intended to be robust, low maintenance and mindful of the existing character and recent upgrades completed by Council.

Permeability has been prioritised wherever possible to achieve positive WSUD outcomes, with sand and permeable pavers the primary new path materials.

Materials should be locally sourced to reduce environmental footprint and showcase the colours and characteristics of the Adelaide Plains



Brushed Concrete

All existing footpaths have recently been upgraded with a brushed concrete finish and will be retained and remediated where possible.



Compacted Fines

Node points and clear areas for bin collection will primarily use compacted fines for a natural and permeable finish. Fines should be sourced from local Adelaide Hills quarries.



Permeable Pavers

Indented car parking zones will have permeable pavers in a two-toned mottled effect.



Stone Screenings

WSUD swales to be lined with local sandstone and bluestone screenings sourced from Adelaide Hills quarries.



Feature Concrete

Node points with furniture to use a feature concrete paving with sandblasted artwork that mimics the colour tones of local stone



Biodiverse Planting

Extended verge spaces to be planted out with biodiverse planting for habitat creation and significance to cultural concept

Materials

Furniture

- Warmth and texture
- Pleasant tactile experience
- Durable, low maintenance
- Locally sourced, recyclable or natural materials
- Reflect Kaurna storytelling (feature colour could represent key plants or journey from hills to coast etc)



storytelling opportunity



storytelling opportunity



Corten Signage

Self healing and durable steel finish for signage

Corten Edging

Self healing and durable steel finish for garden edging

Felled Logs

Logs salvaged from any tree losses in the area as part of the project works to create informal seating and nature play opportunities



storytelling opportunity



storytelling opportunity



Stone Blocks

Locally sourced Adelaide Hills stone blocks to act as informal seating / nature play opportunities at key nodes. Opportunity to integrate stone carvings

Aluminium Battens

Recycled aluminium wood-look battens to provide a natural look with unlimited recyclability and low maintenance

Furniture Artwork

Integrated commissioned artwork pieces from Kaurna artists throughout precinct