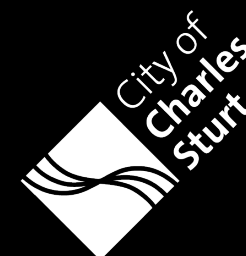




# Henley Hub Concept - Public Consultation

Henley Hub | Library and Community Centre



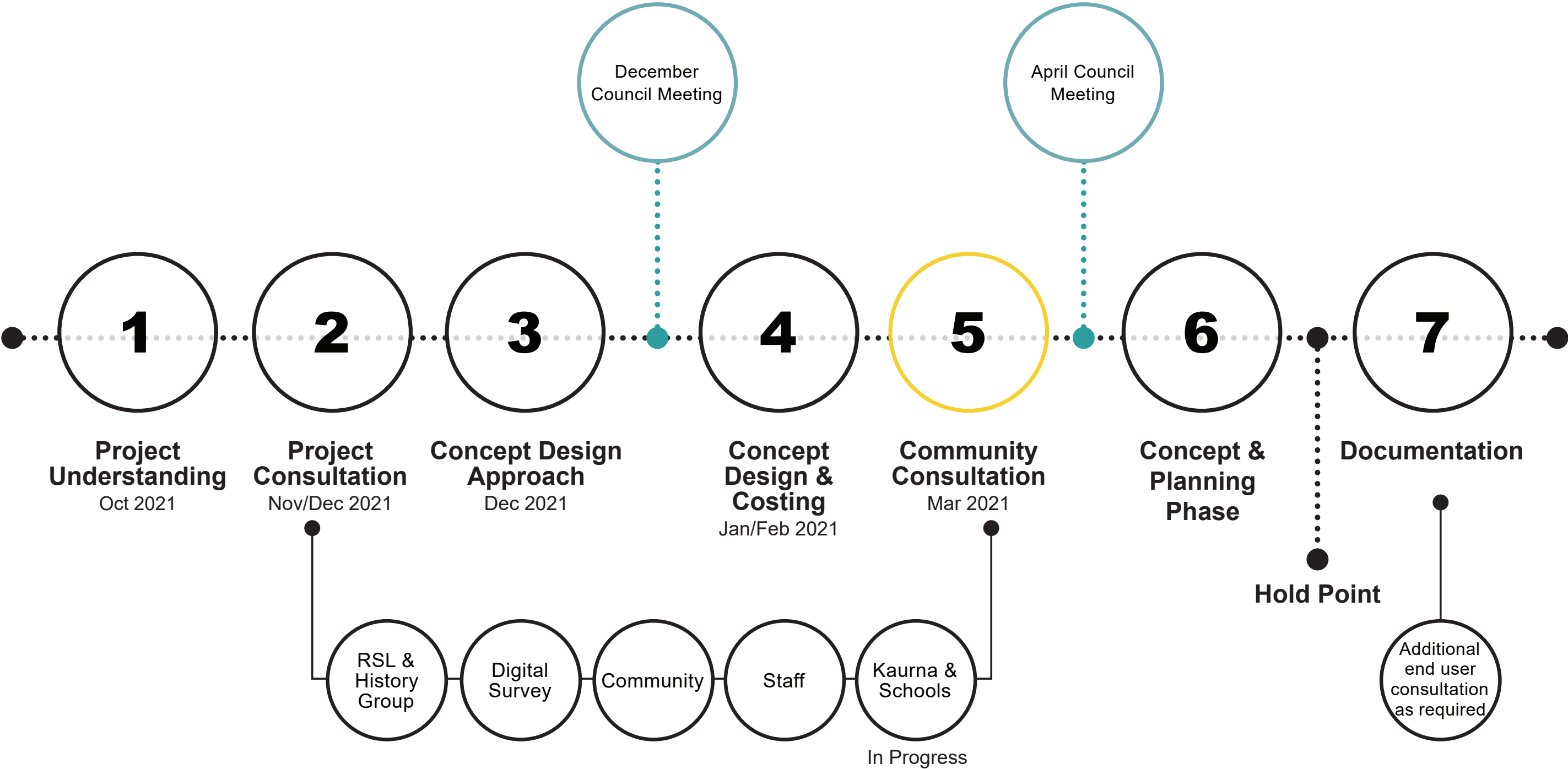
Prepared for City of Charles Sturt  
by JPE Design Studio

11221

28.02.22  
Revision A



# Project Timeline



## Council's Project Vision

“Council aims to create a physical space that provides an **incredible community experience**. We are creating a place for people to come together and share knowledge. A place to connect and be inspired, a place of opportunity, a place to grow, learn and just be.”

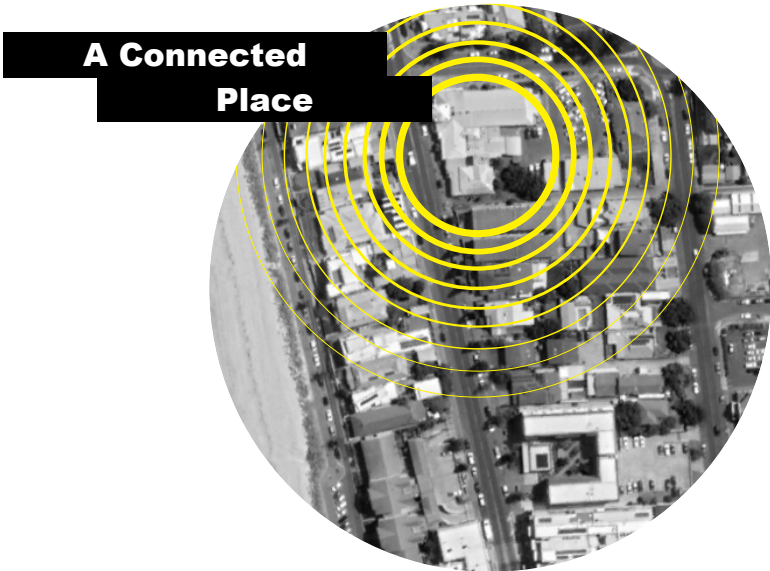
## Council's ESD Vision

Achieve Net Zero corporate emissions by 2025.

To deliver buildings that showcase best practice in sustainable design, construction and ongoing operations.

# Emerging Themes

Following the consultation workshops, a number of emerging design themes were developed to encapsulate the shared themes that we heard from each of the groups. These themes will help inform the design decisions moving forward.





**Henley Hub is a unique community centered destination that celebrates both past and future stories. The design references the sites layered history as a place for gathering and provides a permeable exterior connected to a adaptable interior.**

Design Narrative



Layered History

The site itself has had a strong community presence for circa 100 years as a place for gathering, reflection and shared connections. The design seeks to build on this history whilst also drawing on Kaurna knowledge and stories to create a place layered with past, present and future experiences.



Permeable Exterior

Leveraging the activity to the south of the site at Henley Square, the design intends to create a porous and permeable edge; an active zone that connects into the public realm whilst creating clear points of entry into the building and addresses multiple frontages.



Adaptable Interior

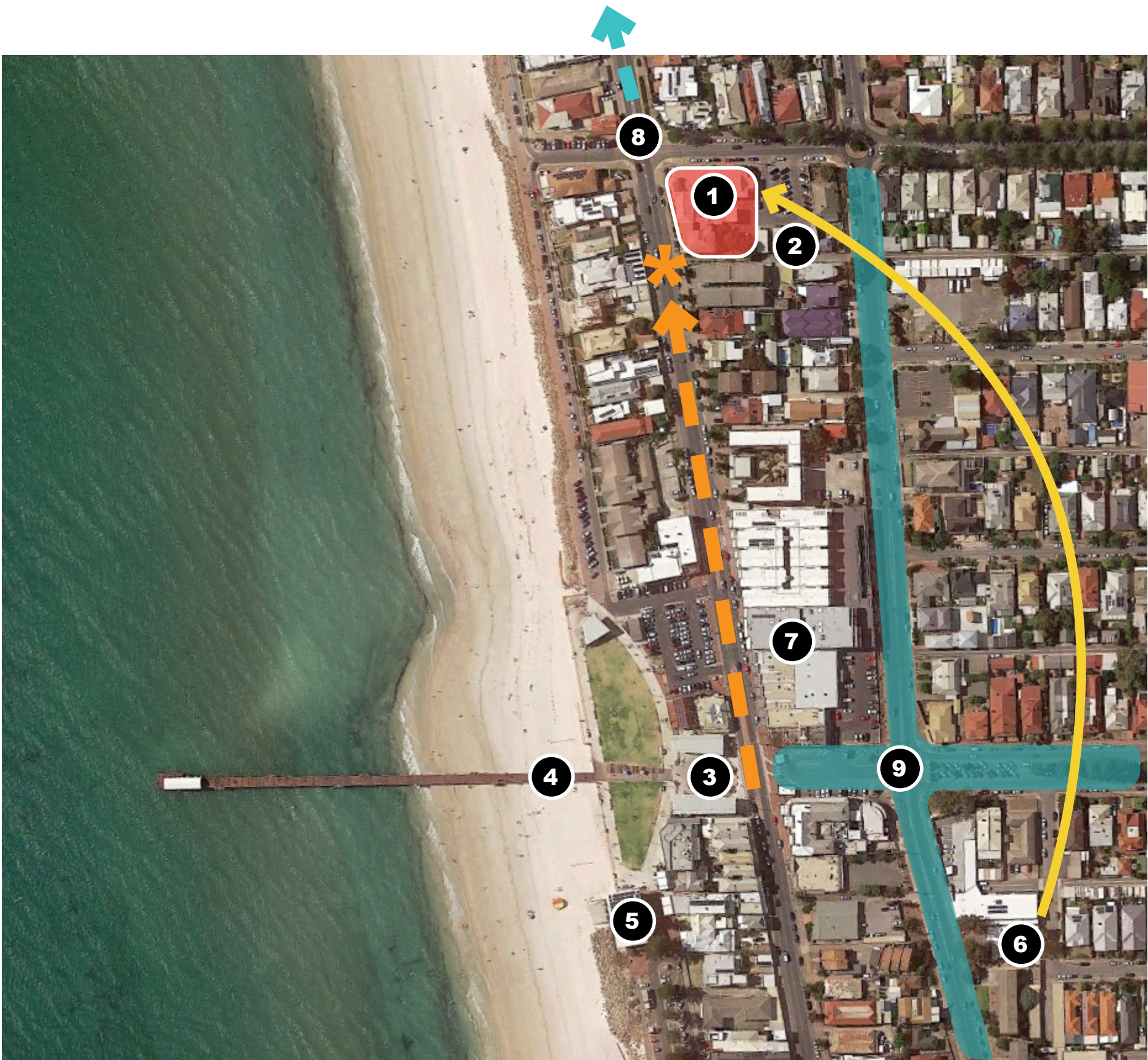
The design aspires to create a building that will continue to evolve with the needs of the community. With a focus on sustainability and futureproofing, the interior spaces will provide flexibility of use and cohesion between both the community centre and library operations.



# Urban Context

Located just 400m to the north of Henley Square, the site will combine the services of both the Henley Beach Library and Henley & Grange Community Centre with a close connection to the Henley & Grange RSL located to the east of the site. The primary point of arrival into the site will be at the south-western corner in order to bring people up along Seaview Road from Henley Square and shops.

- 1 Henley Beach Library and Town Hall
- 2 Henley and Grange RSL
- 3 Henley Square
- 4 Henley Beach Jetty
- 5 Henley Surf Life Saving Club
- 6 Henley and Grange Community Centre
- 7 Shops and supermarket
- 8 Grange to the North
- 9 Military Road and Main Street Upgrade





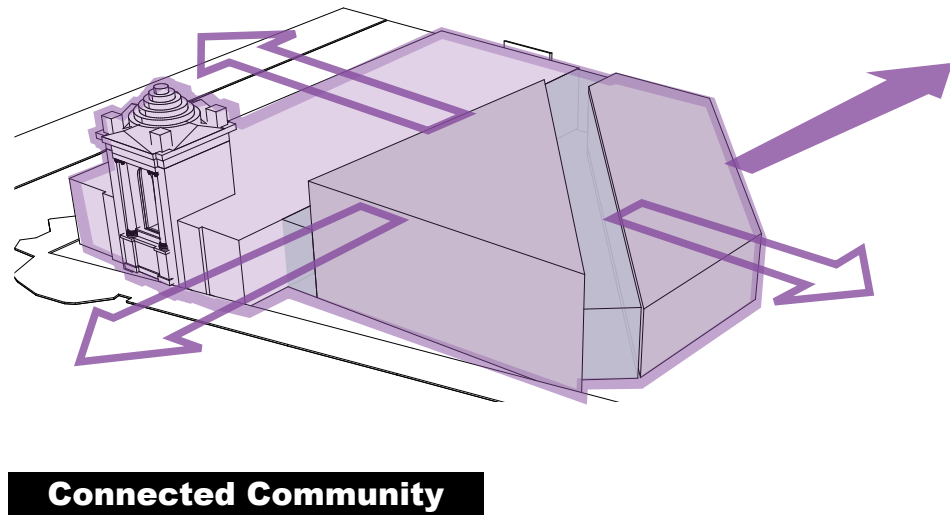
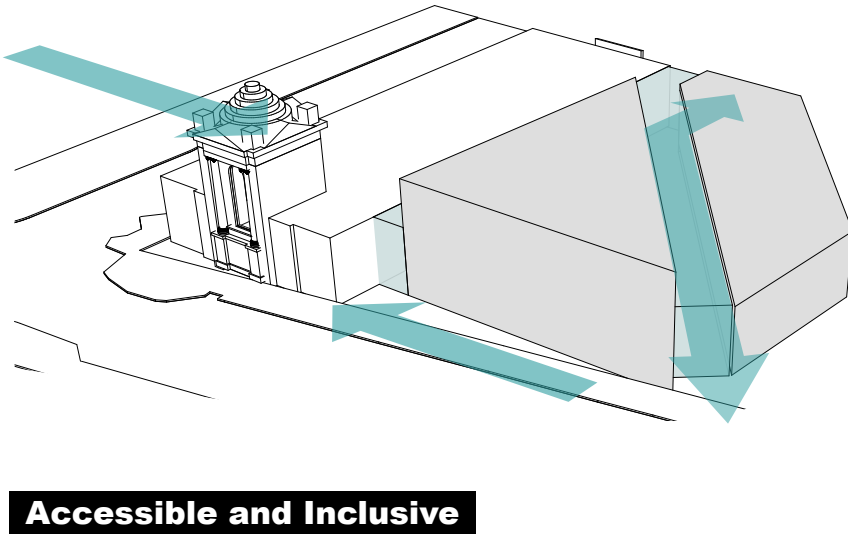
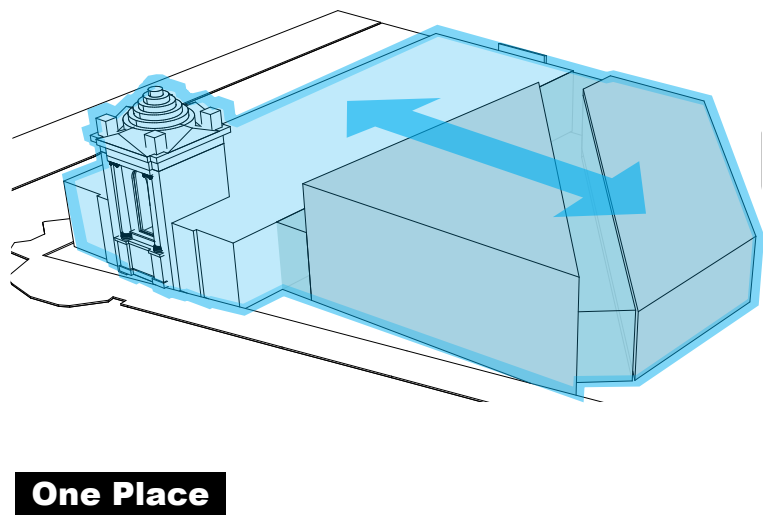
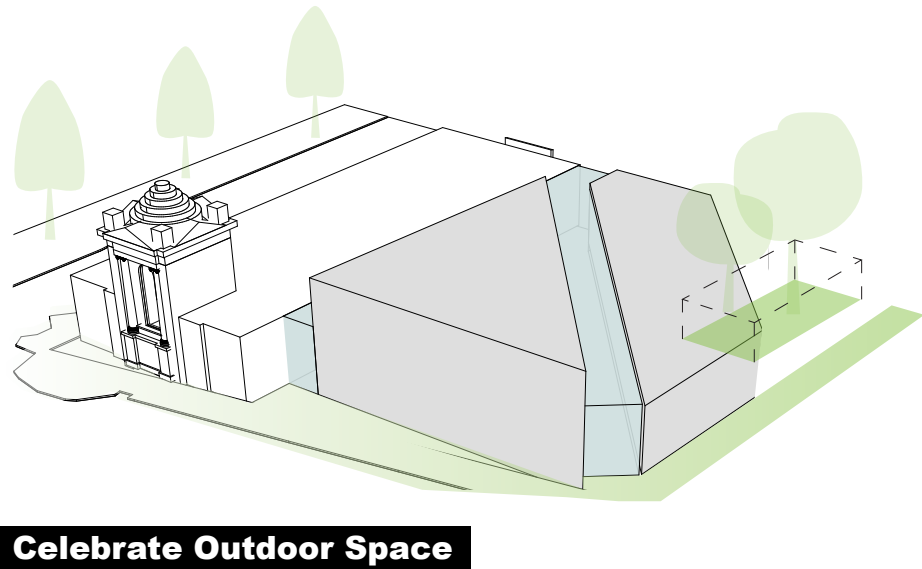
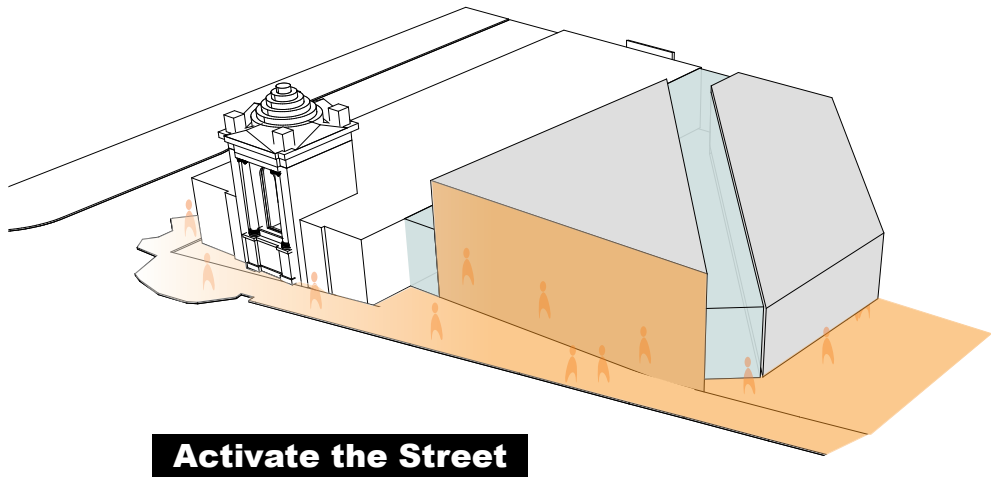
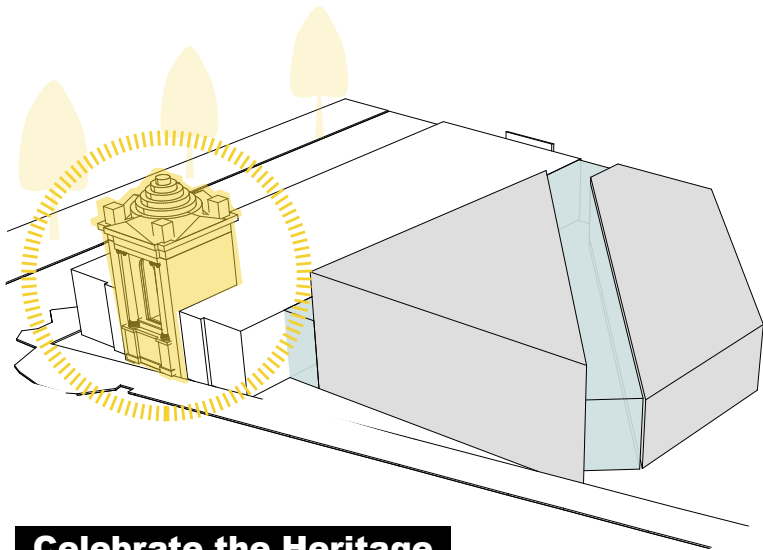
# Streetscape Elevation





# Illustrated Design Principles

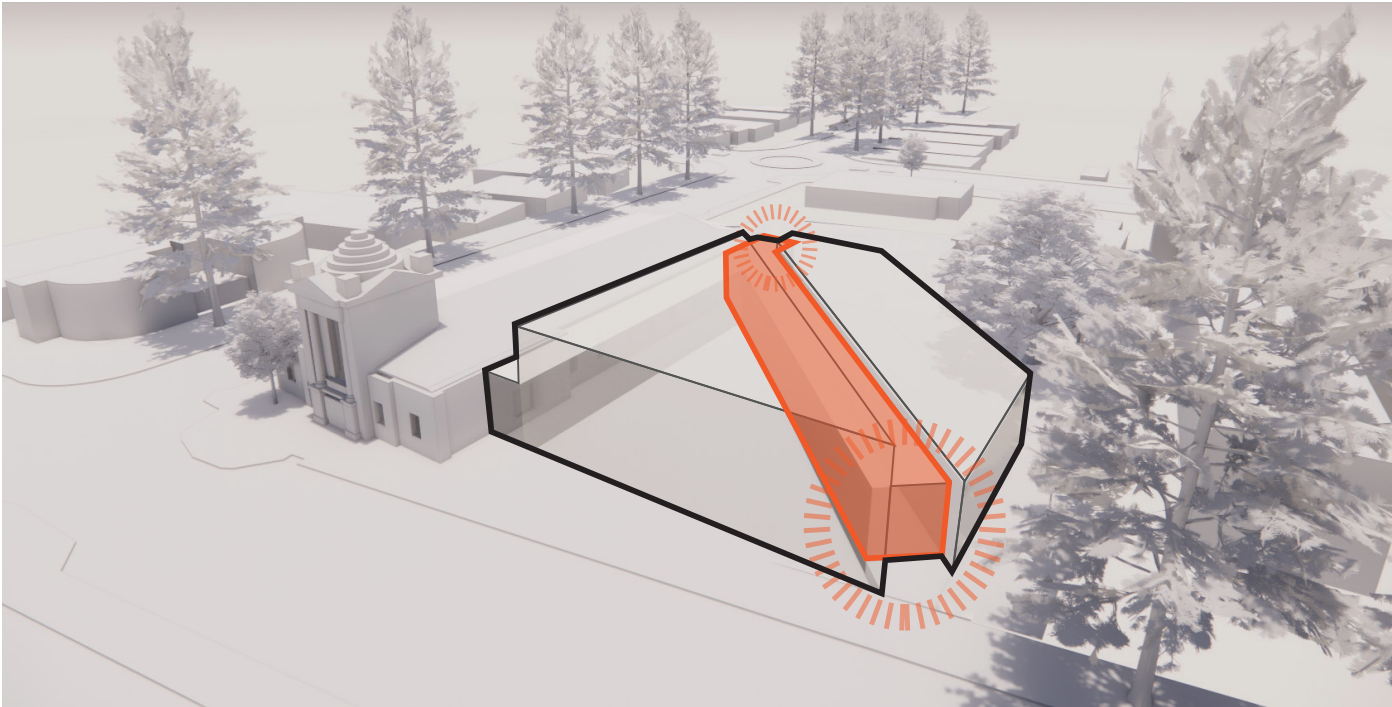
Following the consultation, emerging design themes and site analysis, six key design moves have been developed to inform the built form and concept design.



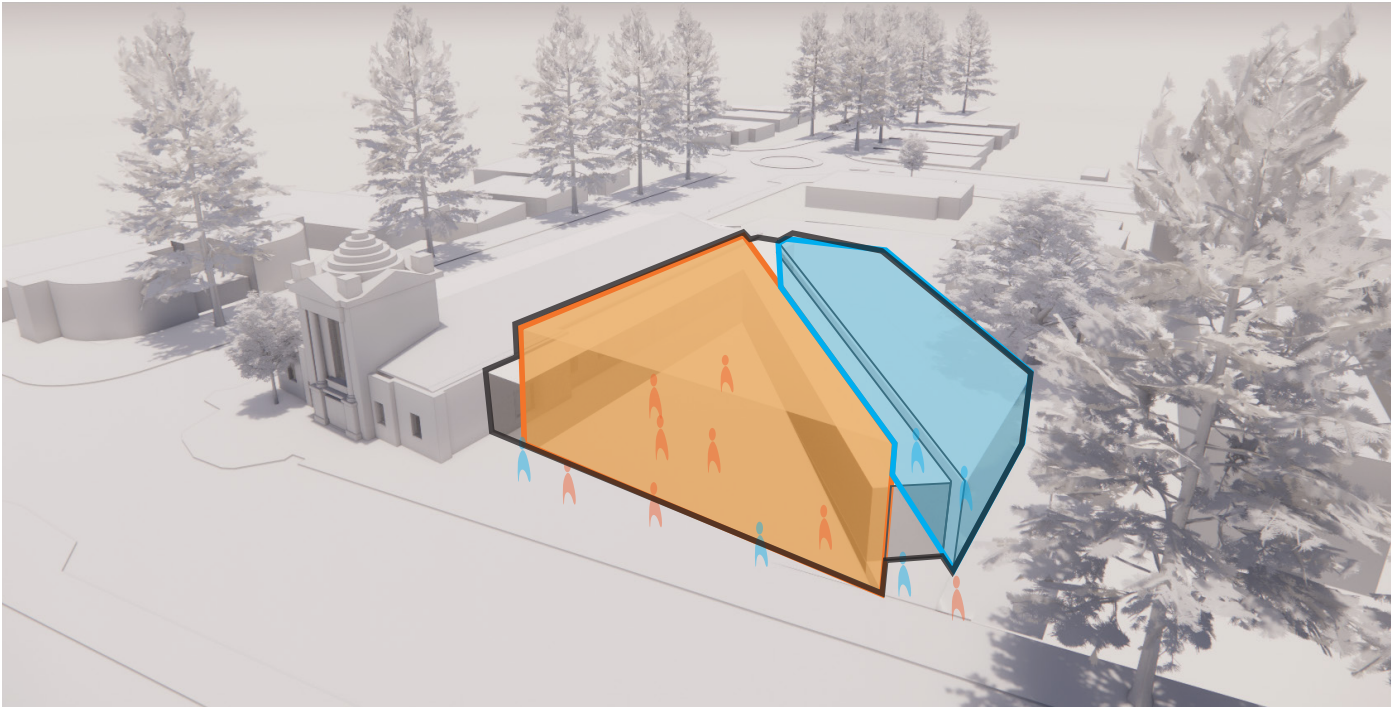


# Massing Diagrams

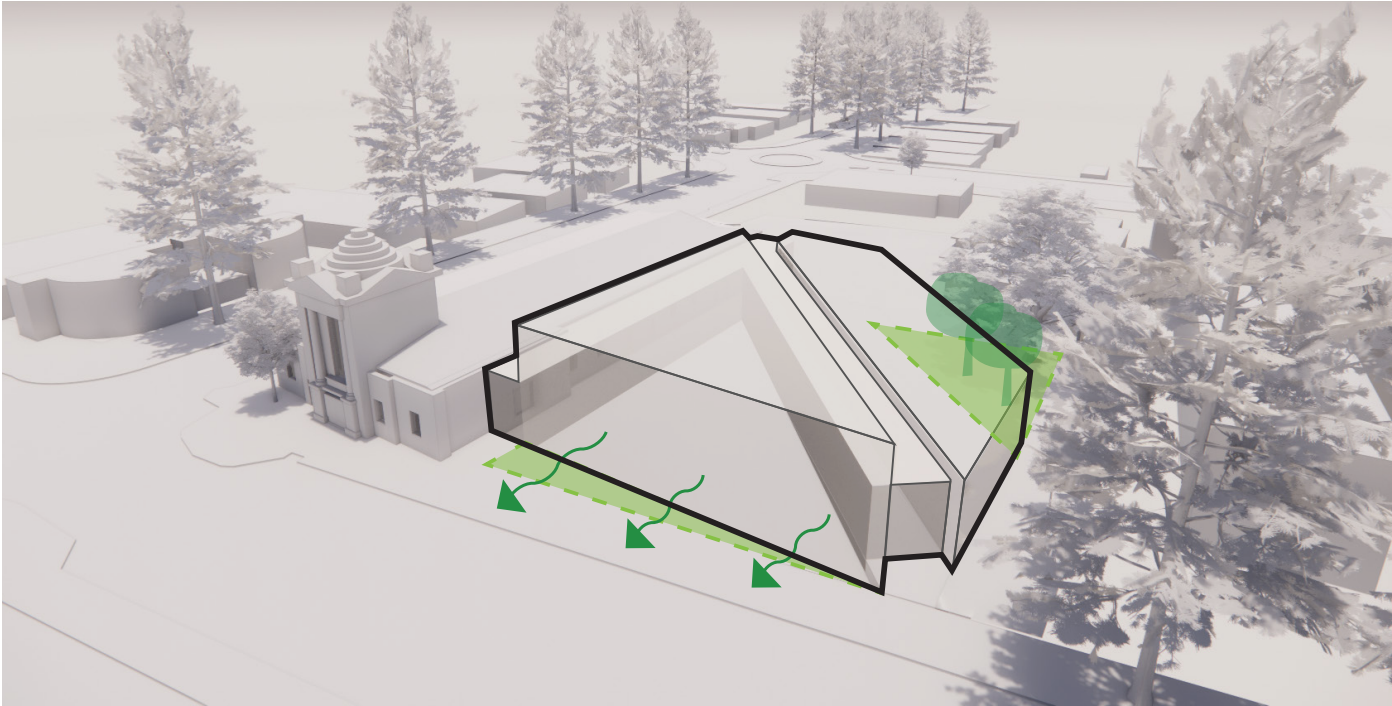
● Entry - Circulation



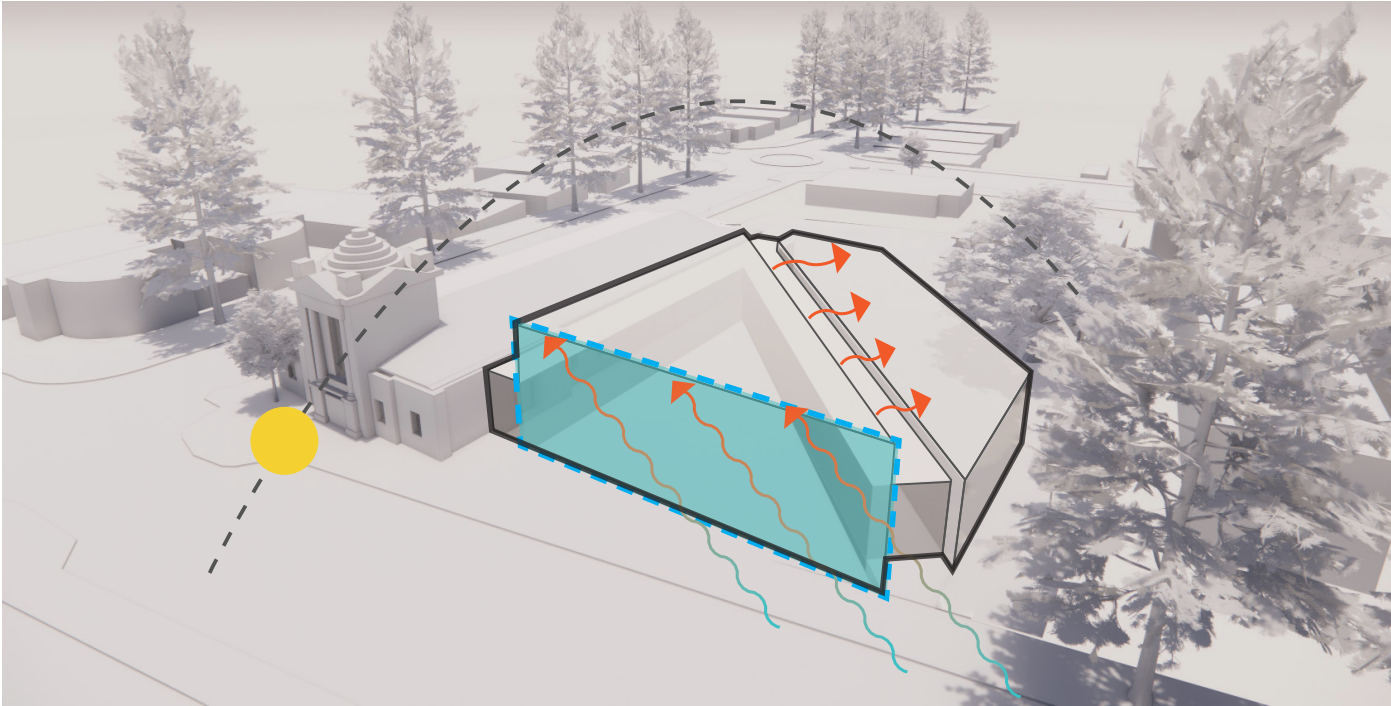
● Quiet - Gathering  
● Noisy - Active



● Landscape - Verge

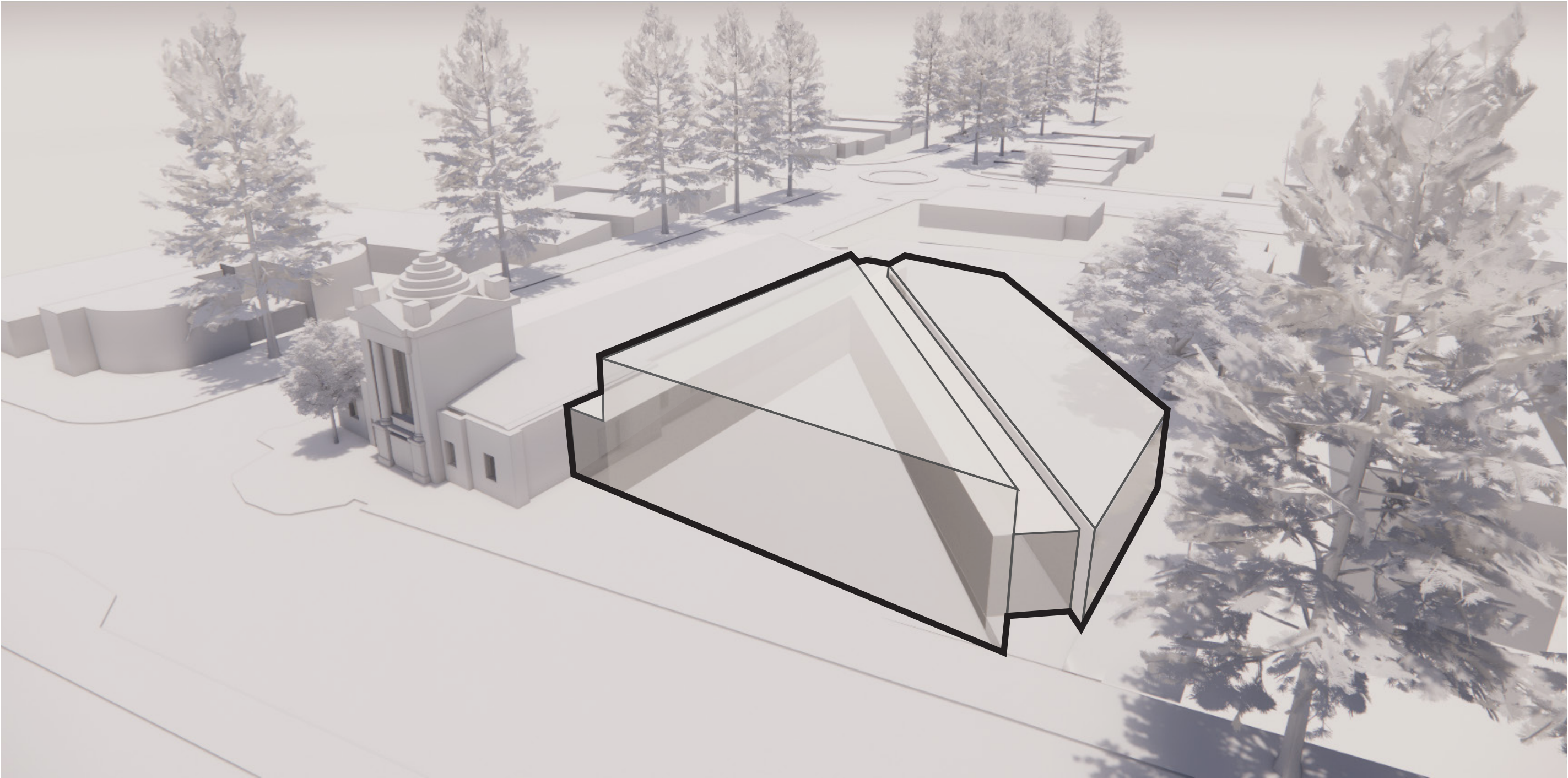


● Orientation  
● Hot Air Purge  
● Thermal Mass





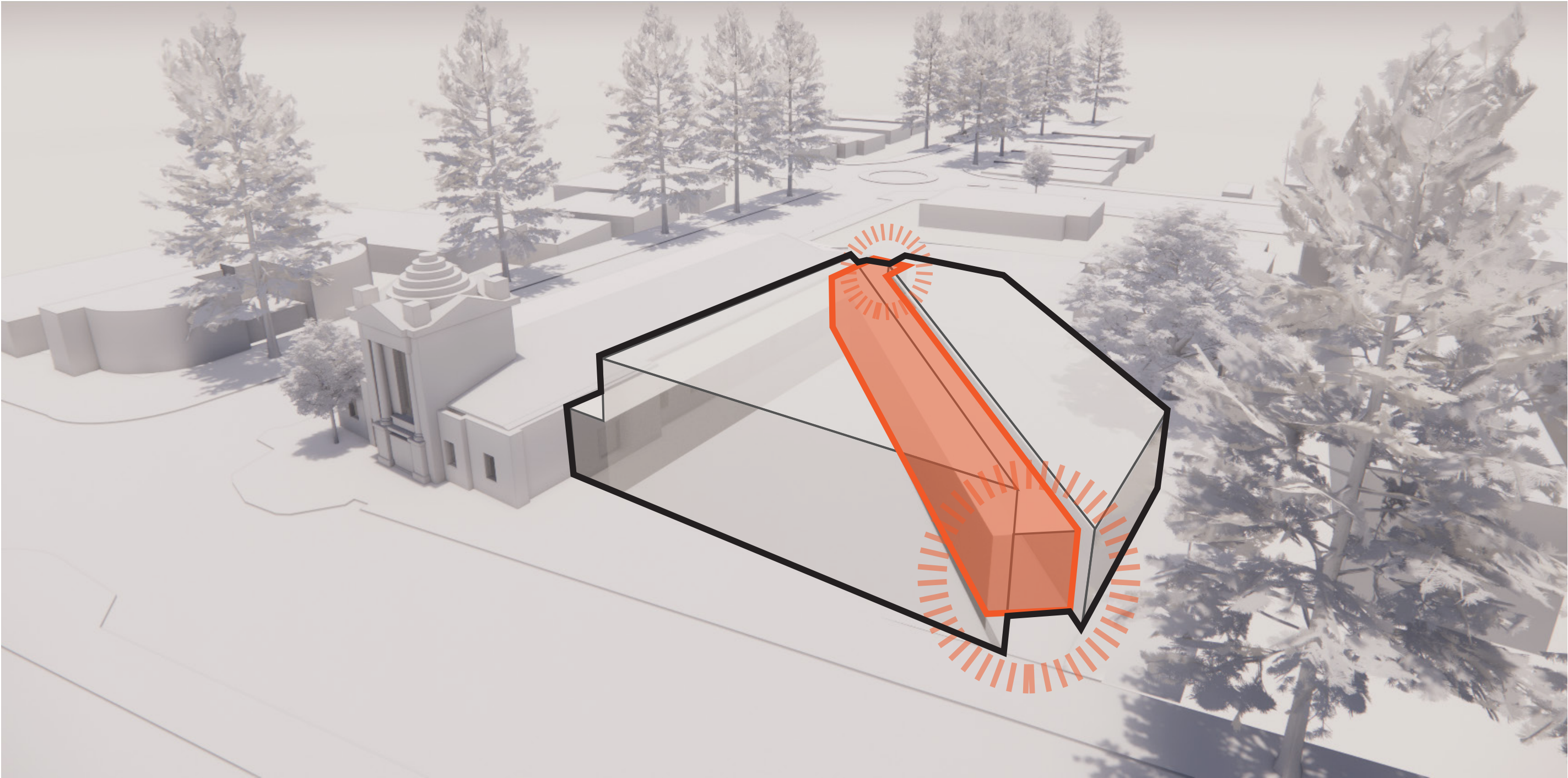
Massing Diagrams





Massing Diagrams

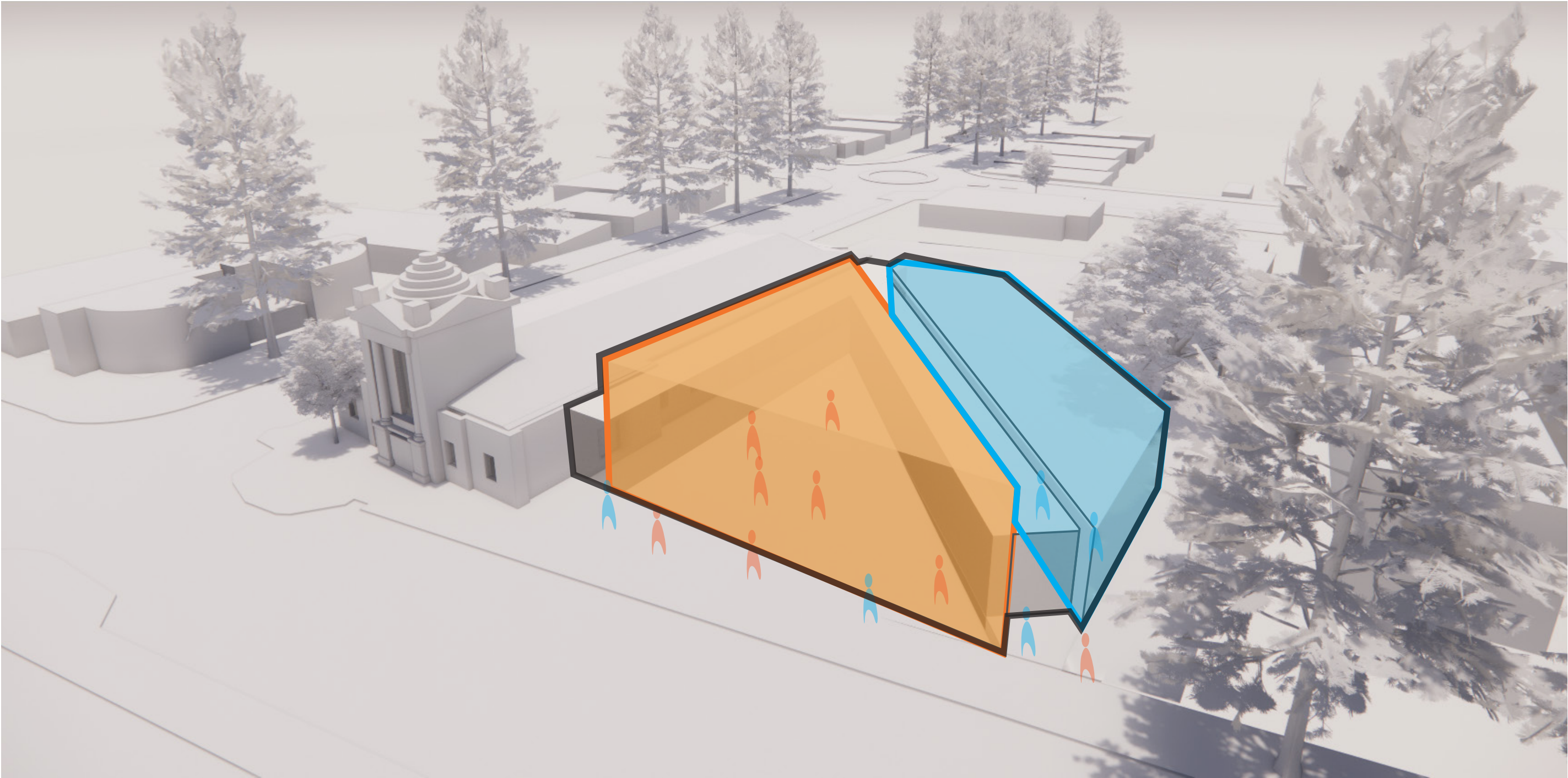
● Entry - Circulation





Massing Diagrams

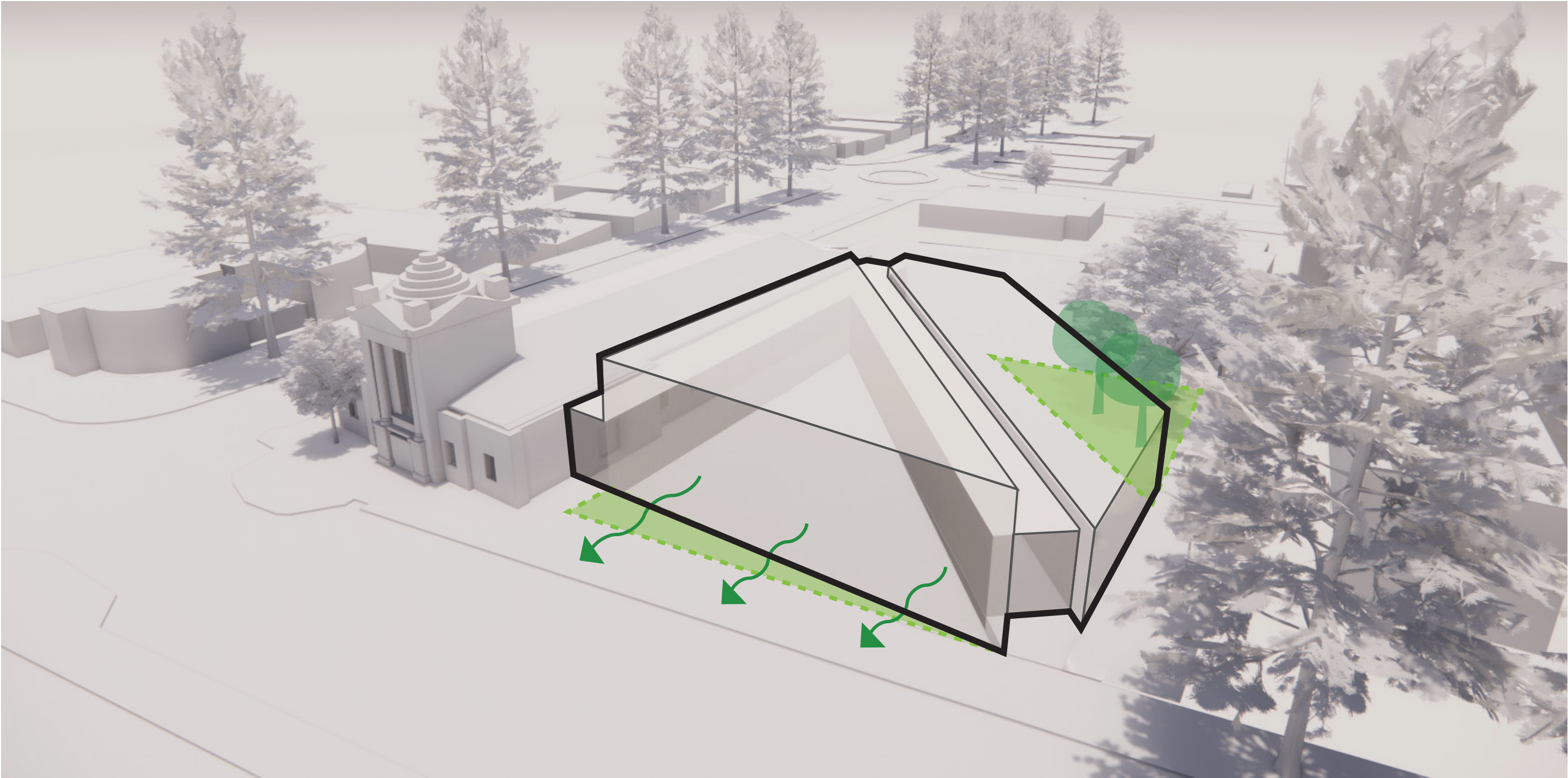
- Quiet - Gathering
- Noisy - Active





Massing Diagrams

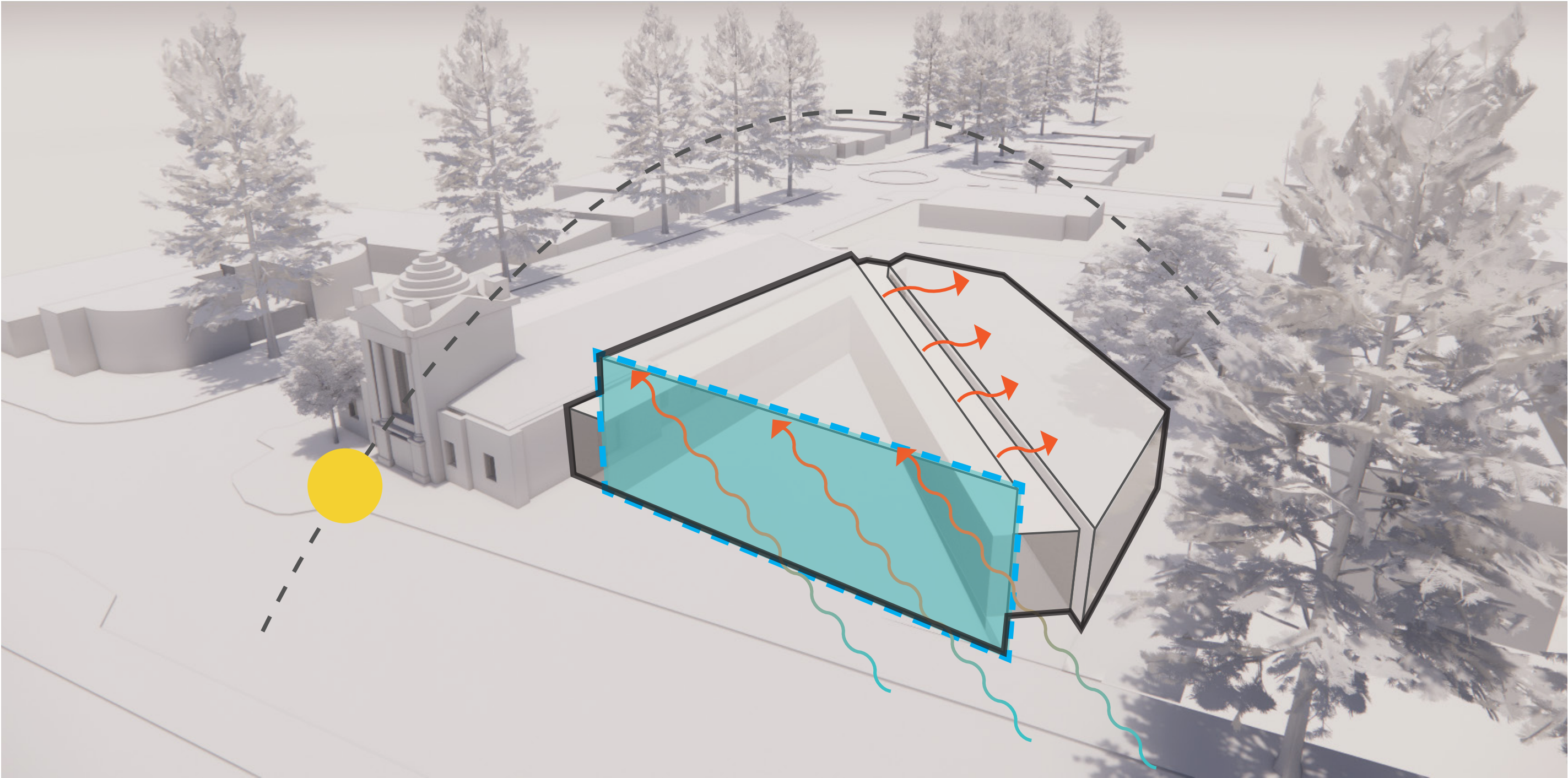
● Landscape - Verge



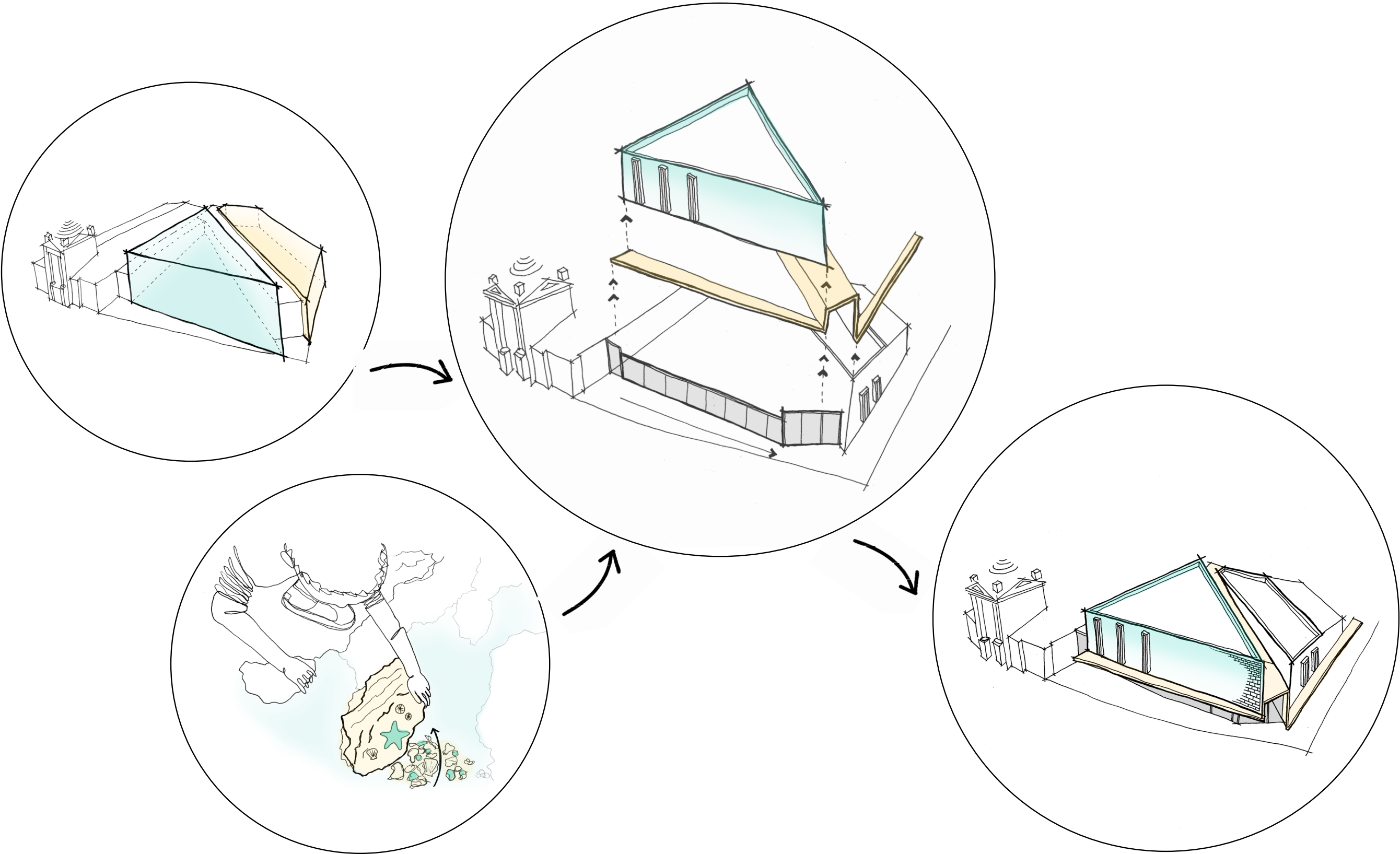


Massing Diagrams

- Orientation
- Hot Air Purge
- Thermal Mass



Concept Diagrams









NORTH STREET

STAFF BACK OF HOUSE AND STORAGE  
UNDER STAGE. ACCESS VIA STAIR AND LIFT

SEAVIEW ROAD

BIKE PARKING

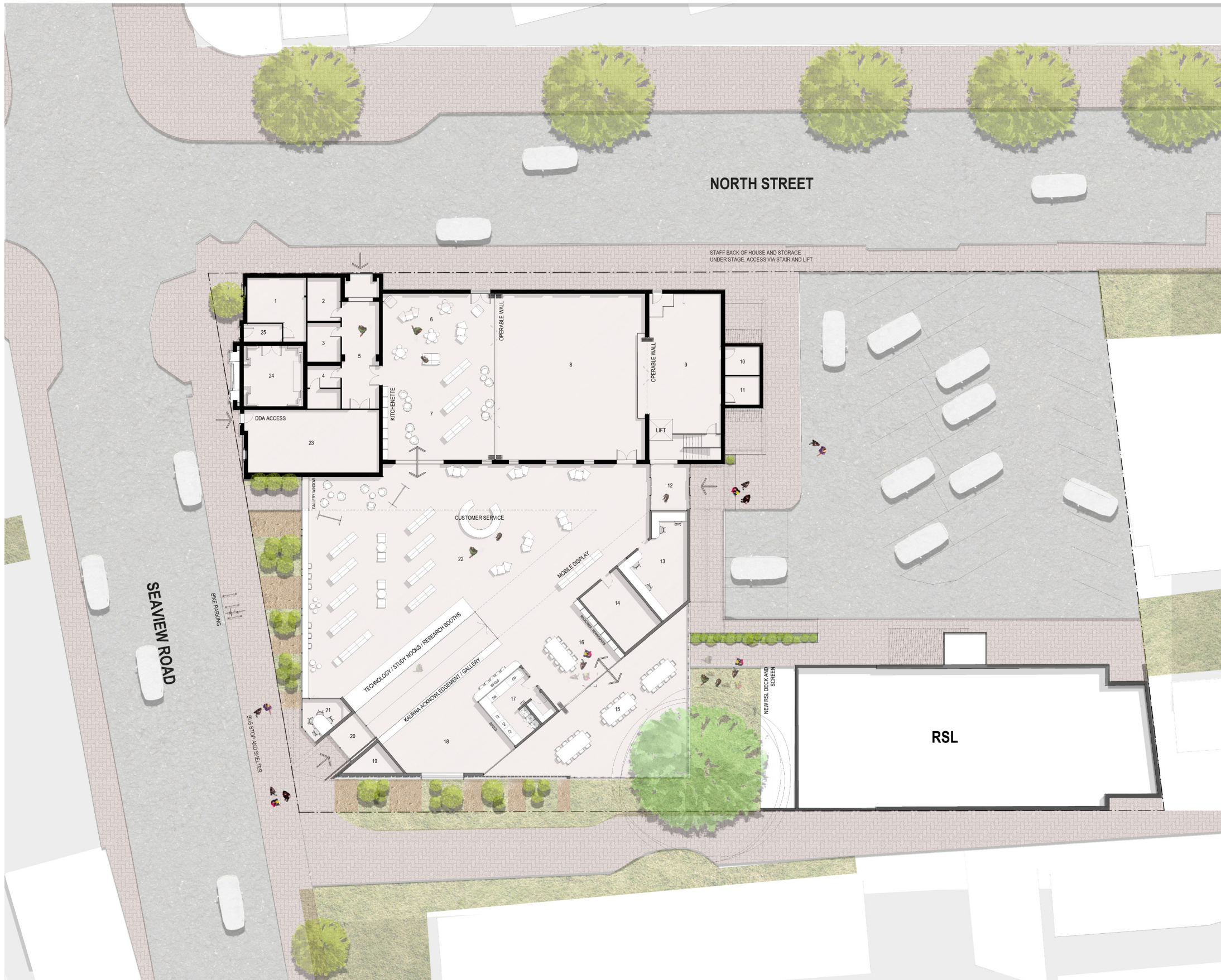
BUS STOP AND SHELTER



RSL





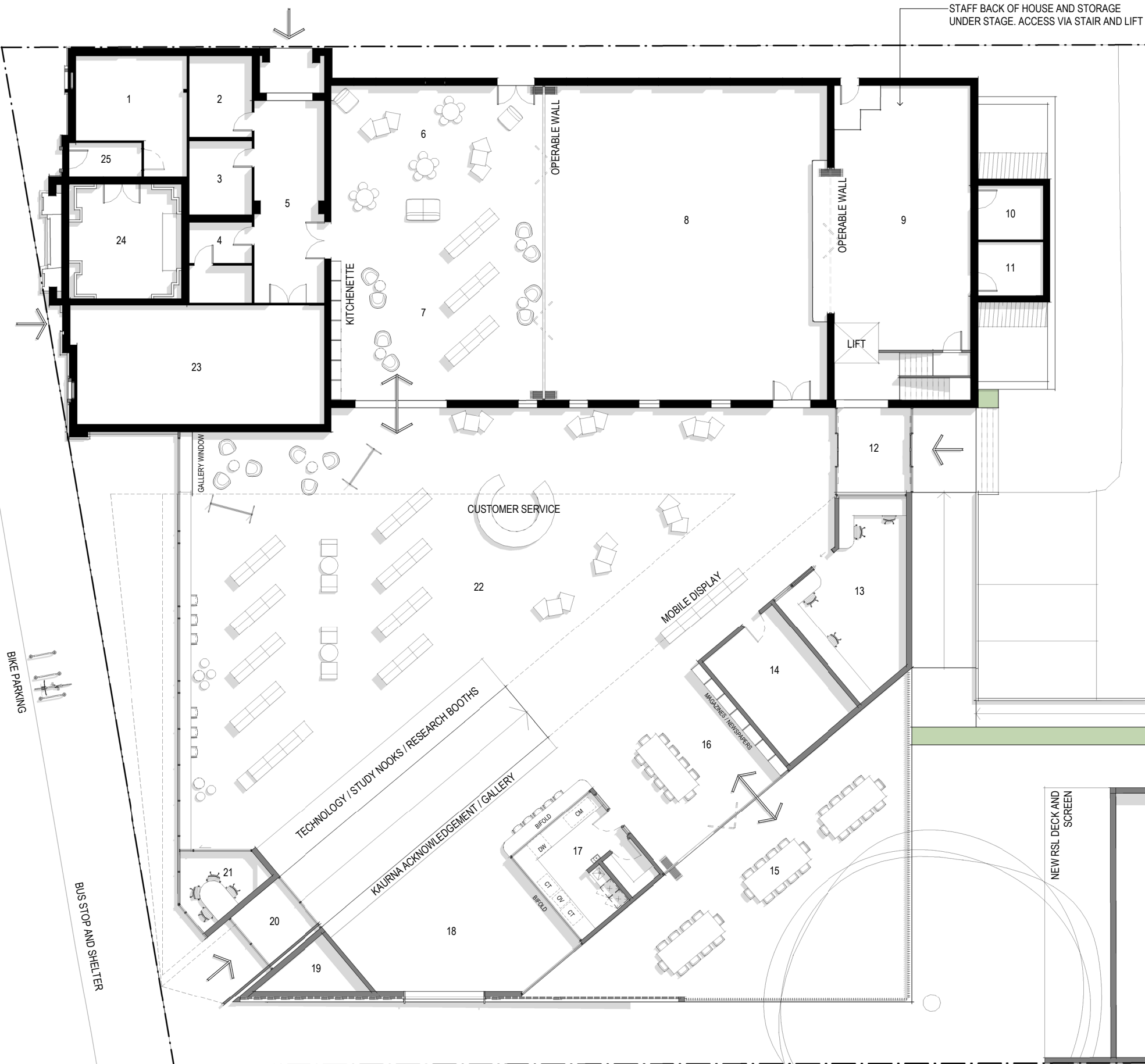


- 01** History Room
- 02** Male w/c
- 03** Female w/c
- 04** Accessible w/c and parents room
- 05** Town Hall Foyer
- 06** Kids Area
- 07** Youth and Parents Collection
- 08** Large Activity Space
- 09** Stage / Creative Space
- 10** Store / Cleaners
- 11** Unisex w/c
- 12** Airlock
- 13** Staff Processing
- 14** Amenities
- 15** Outdoor Undercover Activity Space
- 16** Community Kitchen
- 17** Community Kitchen BOH
- 18** Medium Activity Space
- 19** Services Plant
- 20** Airlock
- 21** Small Meeting Room
- 22** Collection / Reading / Study
- 23** Medium Activity Space
- 24** Soldiers Memorial
- 25** Foyer



NORTH STREET

SEAVIEW ROAD



RSL



Exterior Montage

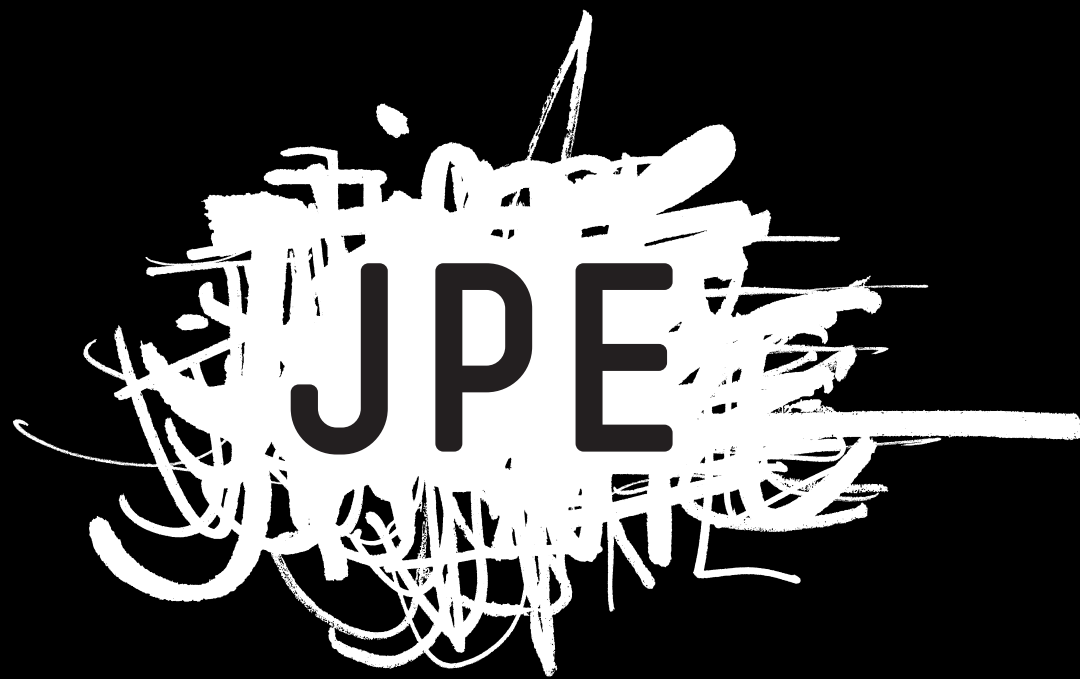




Exterior Montage







# JPE Design Studio

Architecture | Interior Design | Landscape Architecture | Urban Design

[www.jpe.com.au](http://www.jpe.com.au)

(08) 8406 4000

Level 4/19 Gilles Street,  
Adelaide SA 5000