


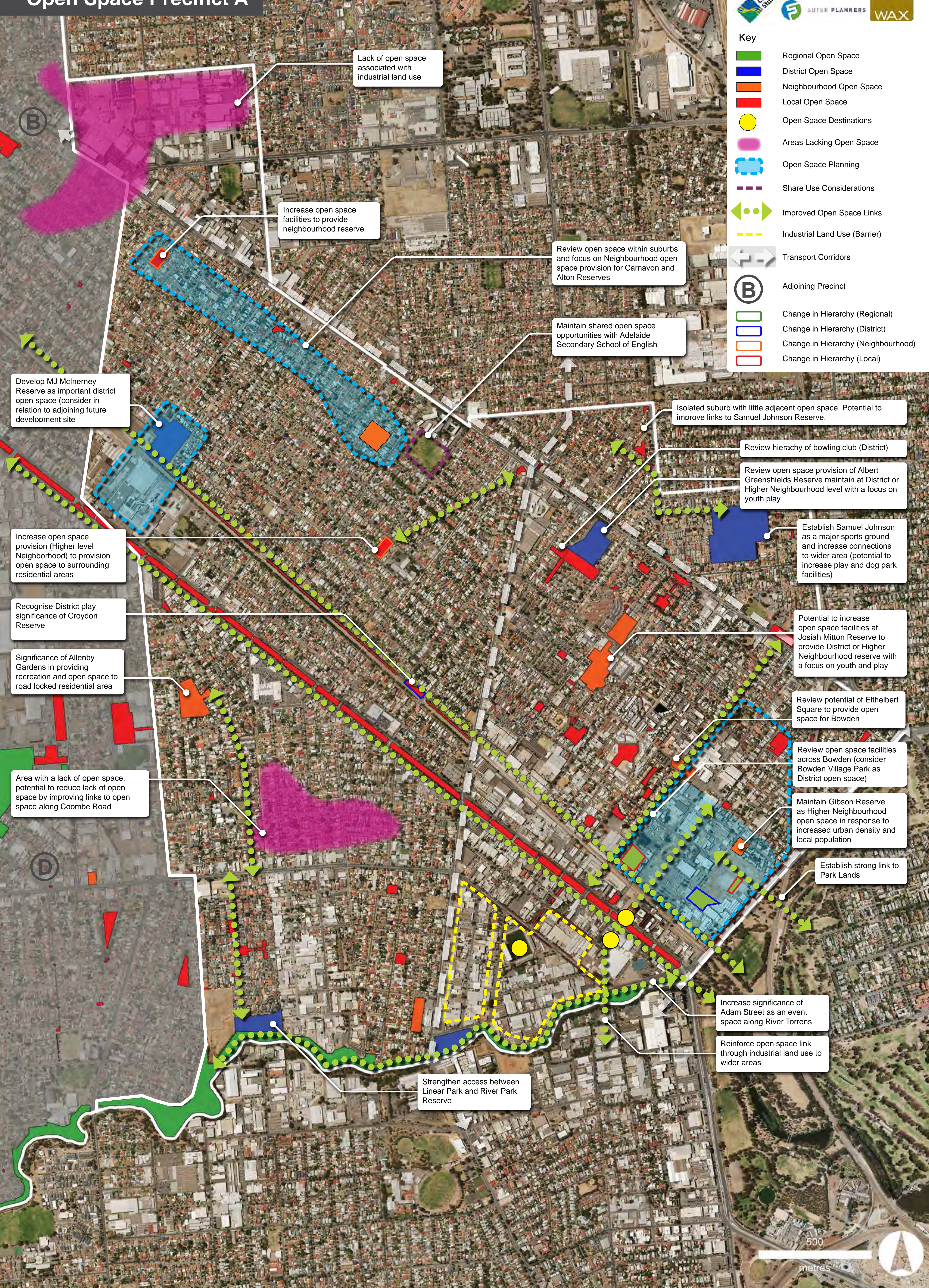


Open Space Precinct A



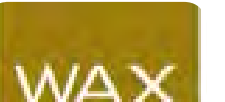
Key

- Regional Open Space
- District Open Space
- Neighbourhood Open Space
- Local Open Space
- Open Space Destinations
- Areas Lacking Open Space
- Open Space Planning
- Share Use Considerations
- Improved Open Space Links
- Industrial Land Use (Barrier)
- Transport Corridors
- Adjoining Precinct
- Change in Hierarchy (Regional)
- Change in Hierarchy (District)
- Change in Hierarchy (Neighbourhood)
- Change in Hierarchy (Local)





















## Open Space Precinct B



Key

- |   |                                     |
|---|-------------------------------------|
|  | Regional Open Space                 |
|  | District Open Space                 |
|  | Neighbourhood Open Space            |
|  | Local Open Space                    |
|  | Open Space Destinations             |
|  | Areas Lacking Open Space            |
|  | Open Space Planning                 |
|  | Share Use Considerations            |
|  | Improved Open Space Links           |
|  | Industrial Land Use (Barrier)       |
|  | Transport Corridors                 |
|  | Adjoining Precinct                  |
|  | Change in Hierarchy (Regional)      |
|  | Change in Hierarchy (District)      |
|  | Change in Hierarchy (Neighbourhood) |
|  | Change in Hierarchy (Local)         |

Review open space access and play to area (balance future open space development particularly Pennington and Windsor Reserves)

Lack of open space associated with industrial land use

Review opportunities for increase facilities at Eric Sutton Reserve to limit impact of lack of open space to west of Pennington

Need to develop additional open space to limit lack of provision

Industry act as barrier and limits access to open space access

Develop open space links across precinct using Avenue / Emma Street reserves and Park Avenue

Maintain sports and play focus at Fawk Reserve

Maintain recreation focus on Sparrow Reserve

Review opportunities for open space facilities at Company Square (potential to work with Port Adelaide Council)

Develop strong links to St Clair open space

Need to develop open space

Review open space to Regional

Develop linked open space through wetlands - recognise District significance of wetlands

Industrial land use acts as barrier

Develop St Clair Oval  
as Regional open space  
with Regional play and  
recreation facilities

Maintain significance of

Consider Alton Reserve as Neighbourhood reserve to reduce lack of open space

Develop Norman Reserve as Higher Neighbourhood to increase recreation provision and off set impact of surrounding transport corridors - consider shared use with St Margets Kindergarten

Ⓐ




©

500 metres



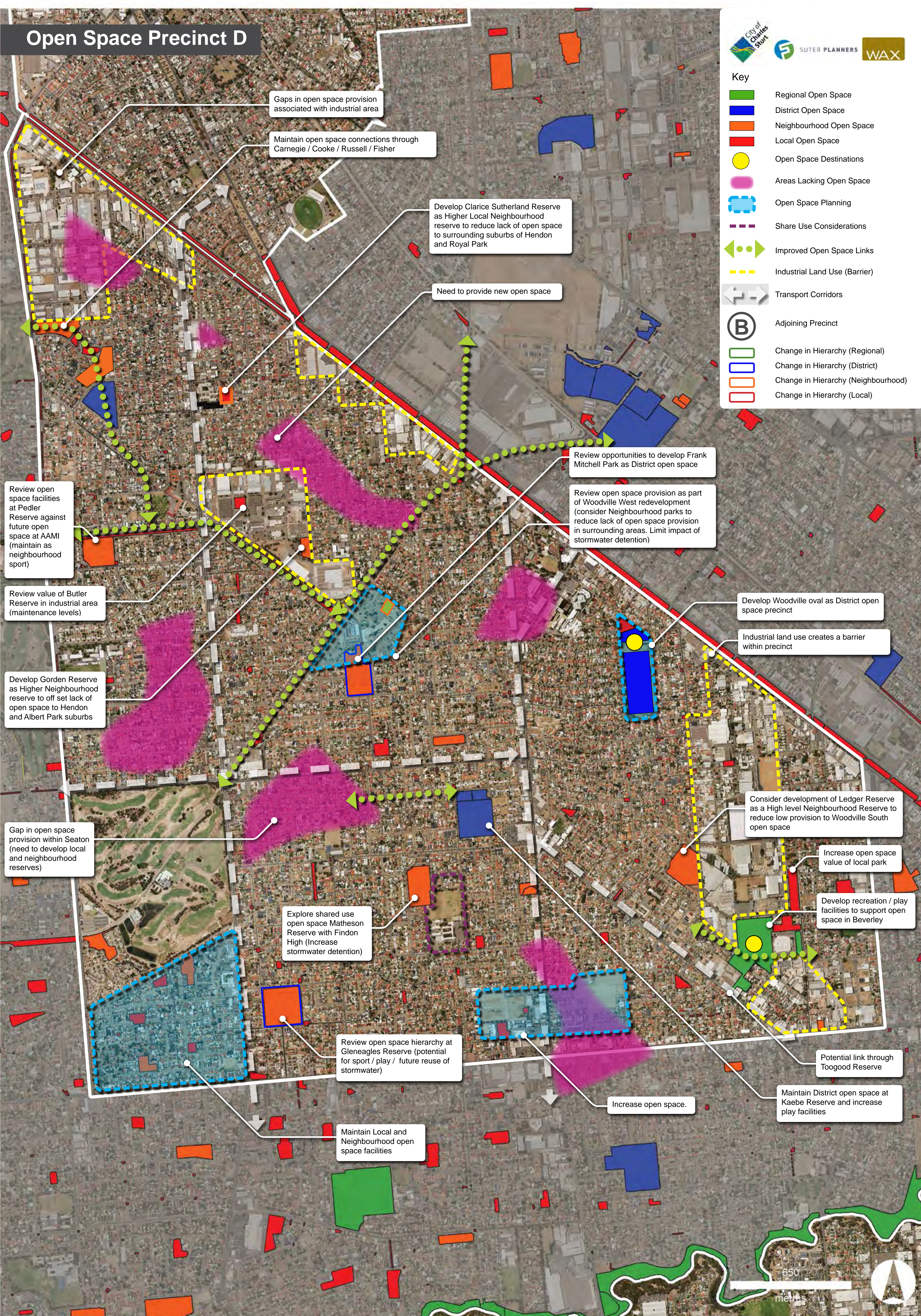


# Open Space Precinct D



**Key**

- Regional Open Space
- District Open Space
- Neighbourhood Open Space
- Local Open Space
- Open Space Destinations
- Areas Lacking Open Space
- Open Space Planning
- Share Use Considerations
- Improved Open Space Links
- Industrial Land Use (Barrier)
- Transport Corridors
- Adjoining Precinct
- Change in Hierarchy (Regional)
- Change in Hierarchy (District)
- Change in Hierarchy (Neighbourhood)
- Change in Hierarchy (Local)



650  
metres





# Open Space Precinct E (North)

Reduce the gap in open space provision in CCS by increasing links to EP Nazer Reserve

Increase youth focus of open space and develop Regional BMX (potential to increase amenity to support aquatic sports)

Maintain open space and heritage significance of Point Malcolm Reserve

Potential to develop Regional sports hub (West Lakes Shore and Jubilee Oval)

Review District hierarchy as catchment is Local or Neighbourhood

Develop Inlet Reserve as Regional (State) rowing facility and enhance the facilities

Maintain the Regional and State significance of Tennyson dunes in relation to biodiversity

Potential key park and boating area

Review parks, links and facilities to create active open space network to lake edge

Review Local open space provision and links around lake

Develop open space opportunities as part of AAMI stadium redevelopment to create District recreation and sport facilities

Key open space link

Review opportunities to provide open space amenity and function

Review open space hierarchy to increase to Regional

See Precinct E (South)



Key

- Regional Open Space
- District Open Space
- Neighbourhood Open Space
- Local Open Space
- Open Space Destinations
- Areas Lacking Open Space
- Open Space Planning
- Share Use Considerations
- Improved Open Space Links
- Industrial Land Use (Barrier)
- Transport Corridors
- Adjoining Precinct
- Change in Hierarchy (Regional)
- Change in Hierarchy (District)
- Change in Hierarchy (Neighbourhood)
- Change in Hierarchy (Local)

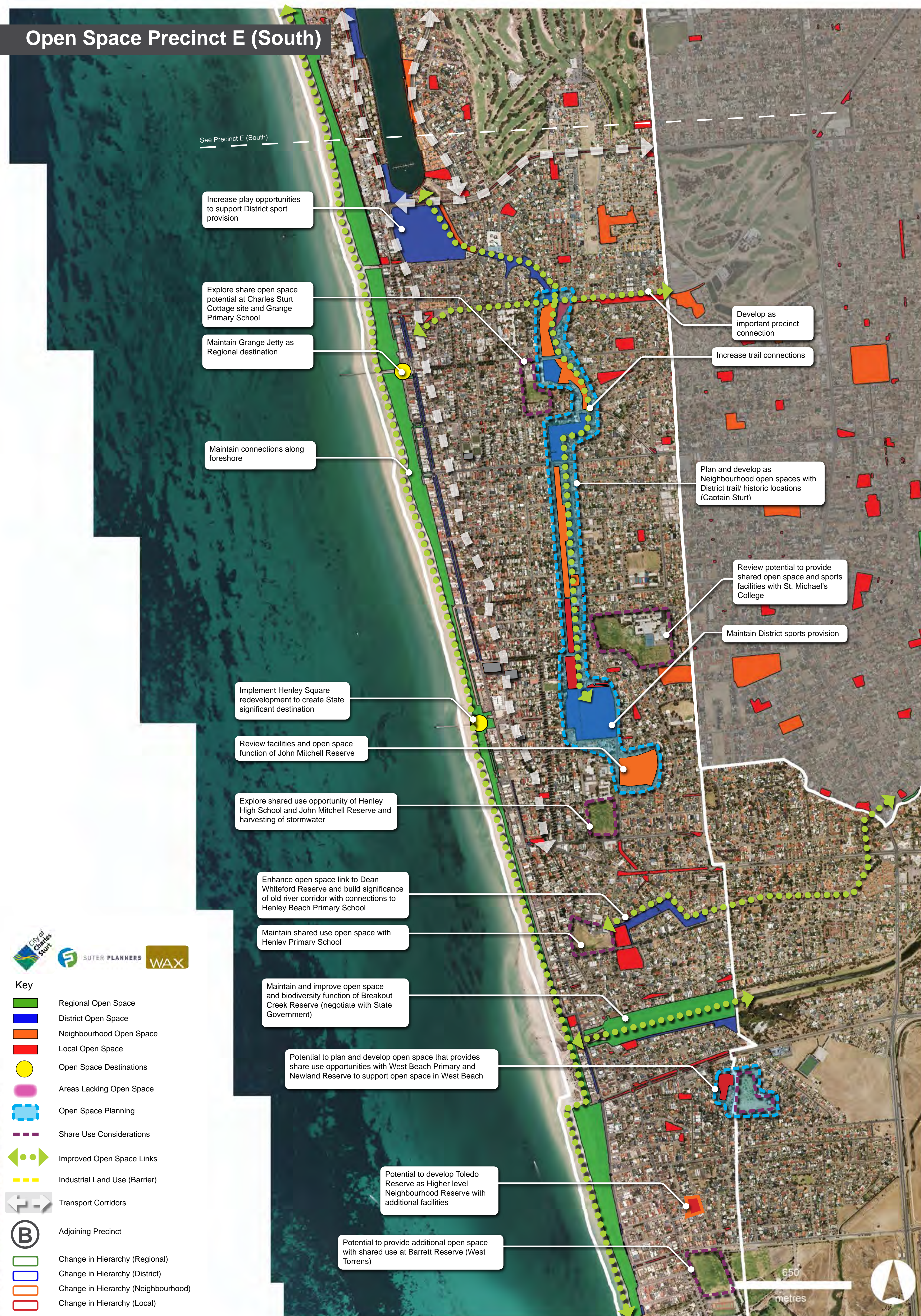
650

metres





# Open Space Precinct E (South)





# Open Space Precinct C

Consider shared use opportunities with Kidman Park Primary

Maintain Regional open space facilities at Collins Reserve and increase play and youth facilities (consider role of surrounding Local open space)

Review large number of reserves around Collins reserve explore potential for partial rationalisation and develop appropriate maintenance and management

Develop Devonshire Reserve as Higher Level Neighbourhood open space to increase open space facilities in suburb

Review open space function of Bentley Reserve (limited access due to cul-de-sac location)

Review size, design and function of Sunningdale Reserve potential sport, play and stormwater

Lack of open space. Review open space provision (Industrial land future development)

Industry as barrier to open space

Improve access along Malcoln Street to increase connections to open space

Maintain sports focus at Flinders Park, potential to increase play value (District play and sport with toilets)

Consider impact of industrial land impacting on east / west access to open space (need to recognise significance of Valletta Road as access link)

Opportunity to create open space link through Government land (Office of Sport and Recreation)

Retain Regional open space connections along Torrens Linear park

Potential to increase facilities at Debeney Reserve to create Neighbourhood open space

Consider absence of open space and need to plan for small reserves to improve access to open space

Consider potential for shared open space facilities and links to linear park through Nazareth School

Increase open space facilities at Torres Reserve to create Neighbourhood open space to Flinders Park (reduce isolated residential character Holbrooks Road / industrial)

Maintain connection to open space through future development site

J. Kelley Reserve important (possible Neighbourhood open space)



Key

- Regional Open Space
- District Open Space
- Neighbourhood Open Space
- Local Open Space
- Open Space Destinations
- Areas Lacking Open Space
- Open Space Planning
- Share Use Considerations
- Improved Open Space Links
- Industrial Land Use (Barrier)
- Transport Corridors
- Adjoining Precinct
- Change in Hierarchy (Regional)
- Change in Hierarchy (District)
- Change in Hierarchy (Neighbourhood)
- Change in Hierarchy (Local)

